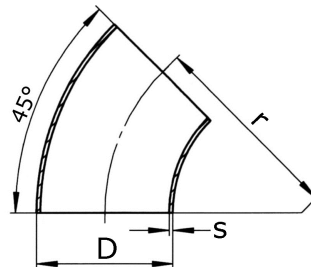
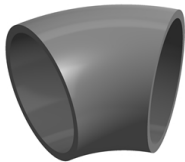




45° Rohrbogen Typ 3  
geschweißt DIN 2605

Kurzbezeichnung: 45\*



Technisches Produktblatt

D	s	r	Tol	kg	Art.-Nr.
15,0	1,5	20,0	+/- 2,5	0,008	45-015-015
18,0	1,5	23,0	+/- 2,5	0,011	45-018-015
18,0	2,0	23,0	+/- 2,5	0,000	45-018-020
20,0	1,5	25,0	+/- 2,5	0,014	45-020-015
20,0	2,0	25,0	+/- 2,5	0,017	45-020-020
25,0	1,5	27,5	+/- 2,5	0,018	45-025-015
25,0	2,0	27,5	+/- 2,5	0,030	45-025-020
28,0	1,5	31,5	+/- 2,5	0,025	45-028-015
28,0	2,0	31,5	+/- 2,5	0,032	45-028-020
30,0	1,5	33,5	+/- 2,5	0,026	45-030-015
30,0	2,0	33,5	+/- 2,5	0,035	45-030-020
35,0	1,5	45,0	+/- 2,5	0,041	45-035-015
35,0	2,0	45,0	+/- 2,5	0,057	45-035-020
38,0	1,5	45,0	+/- 2,5	0,044	45-038-015
38,0	2,0	45,0	+/- 2,5	0,060	45-038-020
40,0	1,5	45,0	+/- 2,5	0,141	45-040-015
40,0	2,0	45,0	+/- 2,5	0,061	45-040-020
43,0	1,5	47,5	+/- 2,5	0,055	45-043-015
44,5	2,0	51,0	+/- 2,5	0,080	45-044-020
50,0	2,0	71,0	+/- 2,5	0,134	45-050-020
51,0	1,5	67,5	+/- 2,5	0,100	45-051-015
51,0	2,0	67,5	+/- 2,5	0,125	45-051-020
53,0	1,5	72,5	+/- 2,5	0,114	45-053-015
54,0	2,0	70,0	+/- 3,0	0,140	45-054-020
57,0	2,0	75,0	+/- 3,0	0,162	45-057-020
63,5	1,6	82,5	+/- 3,0	0,155	45-063-016
68,0	1,5	85,0	+/- 3,0	0,000	45-068-015
69,0	2,0	90,0	+/- 3,0	0,240	45-069-020
69,0	2,0	92,0	+/- 3,0	0,227	45-069-020
70,0	2,0	92,0	+/- 3,0	0,263	45-070-020
73,0	1,5	95,0	+/- 3,0	0,189	45-073-015
80,0	2,0	120,0	+/- 3,0	0,311	45-080-020
84,0	2,0	120,0	+/- 3,0	0,318	45-084-020
101,6	2,0	133,5	+/- 3,0	0,516	45-101-020
104,0	2,0	150,0	+/- 3,0	0,605	45-104-020
108,0	2,0	142,5	+/- 3,0	0,570	45-108-020

D	s	r	Tol	kg	Art.-Nr.
108,0	3,0	142,5	+/- 3,0	0,865	45-108-030
108,0	4,0	142,5	+/- 3,0	1,200	45-108-040
129,0	2,0	187,5	+/- 4,0	0,876	45-129-020
133,0	3,0	181,0	+/- 3,0	1,421	45-133-030
154,0	2,0	225,0	+/- 4,0	1,365	45-154-020
159,0	2,0	216,0	+/- 4,0	0,850	45-159-020
159,0	3,0	216,0	+/- 4,0	1,950	45-159-030
204,0	2,0	300,0	+/- 4,0	2,275	45-204-020
205,0	2,5	300,0	+/- 4,0	0,000	45-205-025
206,0	3,0	300,0	+/- 4,0	3,000	45-206-030
254,0	2,0	375,0	+/- 5,0	4,556	45-254-020
256,3	3,0	375,0	+/- 5,0	0,000	45-256-030
305,0	2,5	450,0	+/- 5,0	0,000	45-305-025
306,0	3,0	450,0	+/- 5,0	8,455	45-306-030

Verfügbare Werkstoffe: 1.4307, 1.4404, 1.4571

Schweißfittings > Rohrbogen > geschweißt > Typ 3, r=1,5xD > 45° > ohne Schenkel > sonstige Abm.

\*Tipp: Die Eingabe der [Kurzbezeichnung](#) in das Suchfeld auf unserer Website ermöglicht Ihnen den Direktaufruf einer Artikelgruppe. Alternativ [hier klicken](#)