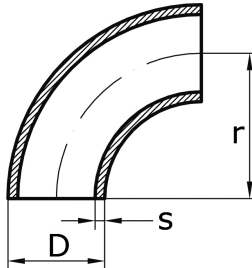
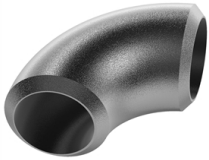


seamless bend 90° type 3

[short name: NB\\*](#)

DIN 2605



## technical product sheet

D	s	r	Tol	Art.-Nr.
12,0	1,5	20,0	+/- 2,5	NB-012-015
12,0	1,5	20,0	+/- 2,5	NB-012-N15
12,0	1,5	26,0	+/- 2,5	NB-012-015
14,0	1,5	20,0	+/- 2,5	NB-014-015
14,0	2,0	20,0	+/- 2,5	NB-014-020
15,0	2,0	20,0	+/- 2,5	NB-015-020
16,0	1,5	20,0	+/- 2,5	NB-016-015
16,0	2,0	20,0	+/- 2,5	NB-016-020
18,0	2,0	22,0	+/- 2,5	NB-018-020
20,0	2,0	25,0	+/- 2,5	NB-020-020
25,0	2,0	28,0	+/- 2,5	NB-025-020
25,0	2,5	28,0	+/- 2,5	NB-025-025
25,0	3,0	28,0	+/- 2,5	NB-025-030
25,0	4,0	28,0	+/- 2,5	NB-025-040
28,0	1,5	32,0	+/- 2,5	NB-028-015
28,0	2,0	32,0	+/- 2,5	NB-028-020
28,0	2,5	32,0	+/- 2,5	NB-028-025
30,0	2,0	34,0	+/- 2,5	NB-030-020
30,0	2,5	34,0	+/- 2,5	NB-030-025
30,0	3,0	34,0	+/- 2,5	NB-030-030
30,0	4,0	34,0	+/- 2,5	NB-030-040
30,0	5,0	34,0	+/- 2,5	NB-030-050
35,0	2,0	45,0	+/- 2,5	NB-035-020
36,0	2,0	45,0	+/- 2,5	NB-036-020
38,0	2,0	45,0	+/- 2,5	NB-038-020
38,0	2,6	45,0	+/- 2,5	NB-038-026
38,0	3,0	45,0	+/- 2,5	NB-038-030
38,0	4,0	45,0	+/- 2,5	NB-038-040
38,0	5,0	45,0	+/- 2,5	NB-038-050
40,0	2,0	45,0	+/- 2,5	NB-040-020
40,0	3,0	45,0	+/- 2,5	NB-040-030
44,5	2,0	51,0	+/- 2,5	NB-044-020
44,5	2,6	51,0	+/- 2,5	NB-044-026
44,5	3,0	51,0	+/- 2,5	NB-044-030
44,5	4,0	51,0	+/- 2,5	NB-044-040
51,0	2,0	64,0	+/- 3,0	NB-051-020

D	s	r	Tol	Art.-Nr.
51,0	2,6	64,0	+/- 3,0	NB-051-026
51,0	4,0	64,0	+/- 3,0	NB-051-040
54,0	2,0	70,0	+/- 3,0	NB-054-020
57,0	3,0	72,0	+/- 3,0	NB-057-030
57,0	4,0	72,0	+/- 3,0	NB-057-040
70,0	2,9	92,0	+/- 3,0	NB-070-029
101,6	4,0	134,0	+/- 3,0	NB-101-040
108,0	4,0	143,0	+/- 3,0	NB-108-040
108,0	5,0	143,0	+/- 3,0	NB-108-050
133,0	4,0	181,0	+/- 3,0	NB-133-040
159,0	4,5	216,0	+/- 4,0	NB-159-045
159,0	6,3	216,0	+/- 4,0	NB-159-063

available material: 1.4541, 1.4571

Butt welding fittings > bends > seamless > type 3,  $r=1,5xD$  > 90° > other dimensions