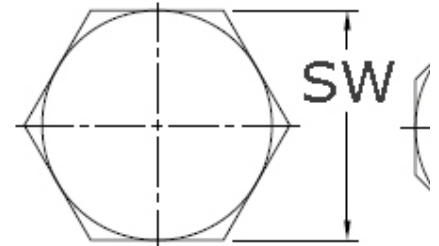
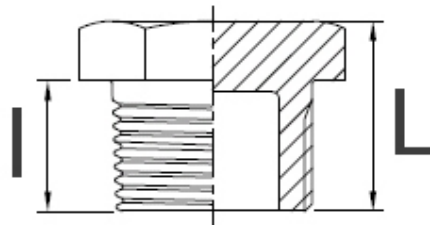


Stopfen, 150 lbs (PN 10)

[Kurzbezeichnung: ST150*](#)



Technisches Produktblatt

NPT	L	I1	SW	SF	kg	Art.-Nr.
1/8"	13,0	9,0	11,0	6-kant	0,010	NPT -ST-018-000-G
1/8"	16,0	11,0	13,0	6-kant	0,010	NPT -ST-018-000-G
1/4"	14,0	10,0	15,0	6-kant	0,024	NPT -ST-014-000-G
1/4"	18,0	12,0	17,0	6-kant	0,024	NPT -ST-014-000-G
3/8"	20,5	12,5	17,5	6-kant	0,044	NPT -ST-038-000-G
1/2"	20,0	15,0	22,0	6-kant	0,067	NPT -ST-012-000-G
1/2"	23,0	16,0	25,0	6-kant	0,067	NPT -ST-012-000-G
3/4"	21,0	15,0	28,0	6-kant	0,040	NPT -ST-034-000-G
3/4"	21,0	15,0	30,0	6-kant	0,040	NPT -ST-034-000-G
3/4"	22,0	16,0	28,0	6-kant	0,040	NPT -ST-034-000-G
3/4"	23,0	16,0	30,0	6-kant	0,040	NPT -ST-034-000-G
1"	24,0	17,0	35,0	8-kant	0,081	NPT -ST-100-000-G
1 1/4"	30,0	20,0	46,0	6-kant	0,170	NPT -ST-114-000-G
1 1/4"	30,0	21,0	45,0	6-kant	0,170	NPT -ST-114-000-G
1 1/2"	31,0	22,0	52,0	6-kant	0,209	NPT -ST-112-000-G
2"	31,0	25,0	62,0	8-kant	0,370	NPT -ST-200-000-G
2"	34,0	24,0	63,0	6-kant	0,370	NPT -ST-200-000-G
3"	41,0	30,0	92,0	8-kant	0,900	NPT -ST-300-000-G

Verfügbare Werkstoffe: V4A

Gewindefittings > Fittings > PN 10 (ECO-Line) > ... mit NPT-Gewinde > Stopfen / Kappen > 6-kt. Stopfen

*Tipp: Die Eingabe der [Kurzbezeichnung](#) in das Suchfeld auf unserer Website ermöglicht Ihnen den Direktauftrag einer Artikelgruppe. Alternativ [hier klicken](#)

