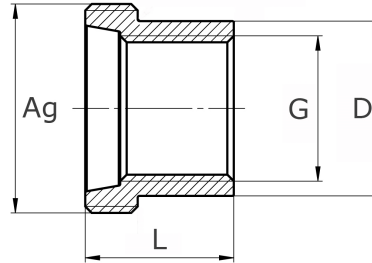




screw-in part conical

short name: [ES-KI\\*](#)



### technical product sheet

| G      | L  | D    | AG     | kg    | Art.-Nr.   |
|--------|----|------|--------|-------|------------|
| 3/8"   | 25 | 21,2 | 3/4"   | 0,000 | ES-038-K0I |
| 1/2"   | 92 | 27,0 | 1"     | 0,070 | ES-012-K0I |
| 3/4"   | 32 | 34,2 | 1 1/4" | 0,000 | ES-034-K0I |
| 1"     | 34 | 40,0 | 1 1/2" | 0,144 | ES-100-K0I |
| 1 1/4" | 38 | 50,0 | 2"     | 0,243 | ES-114-K0I |
| 1 1/2" | 40 | 57,1 | 2 1/4" | 0,203 | ES-112-K0I |
| 2"     | 45 | 70,0 | 2 3/4" | 0,457 | ES-200-K0I |
| 2"     | 45 | 70,1 | 2 3/4" | 0,000 | ES-200-K0I |
| 3"     |    |      | 3 3/4" | 0,819 | ES-300-K0I |

available material: 1.4404

Threaded fittings > unions > conical seat > PN 50/ 100 > "inches"- union nuts > individual parts/ kit > screw-in parts > with female thread