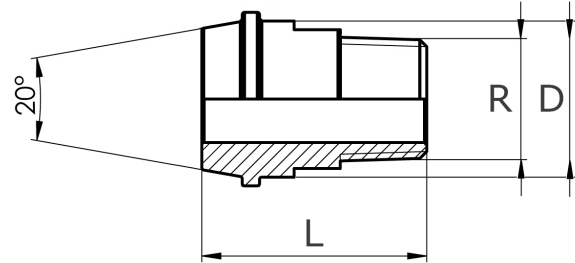




insert part, conical

[short name: ET-KA*](#)



[technical product sheet](#)

R	L	D	Art.-Nr.
1/4"	32	17,5	ET-014-K0A
3/8"	34	21,1	ET-038-K0A
1/2"	39	27,0	ET-012-K0A
3/4"	44	34,0	ET-034-K0A
1"	50	40,0	ET-100-K0A
1 1/4"	52	50,0	ET-114-K0A
1 1/2"	55	57,0	ET-112-K0A
2"	60	70,0	ET-200-K0A
2 1/2"	71	83,0	ET-212-K0A
3"	64	95,0	ET-300-K0A

available material: 1.4404

Threaded fittings > unions > conical seat > PN 50/ 100 > "inches"- union nuts > individual parts/ kit > insert parts > with male thread