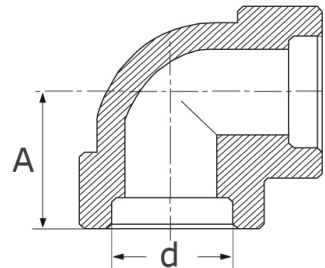


elbow 90° sw, 3000 lbs
high pressure-fitting
ASME B 16.11, ASTM-A 182

[short name: SWWI*](#)



technical product sheet

Zoll	d	A	Art.-Nr.
1/4"	14,4	21	ANSI-SWWI-014-3000-N
3/8"	17,8	25	ANSI-SWWI-038-3000-N
1/2"	22,0	28	ANSI-SWWI-012-3000-N
3/4"	27,4	34	ANSI-SWWI-034-3000-N
1"	34,1	36	ANSI-SWWI-100-3000-N
1 1/4"	42,9	45	ANSI-SWWI-114-3000-N
1 1/2"	49,0	50	ANSI-SWWI-112-3000-N
2"	61,5	58	ANSI-SWWI-200-3000-N

available material: ask

Butt welding fittings > ANSI / ASME > socket welding fittings > elbows 90°