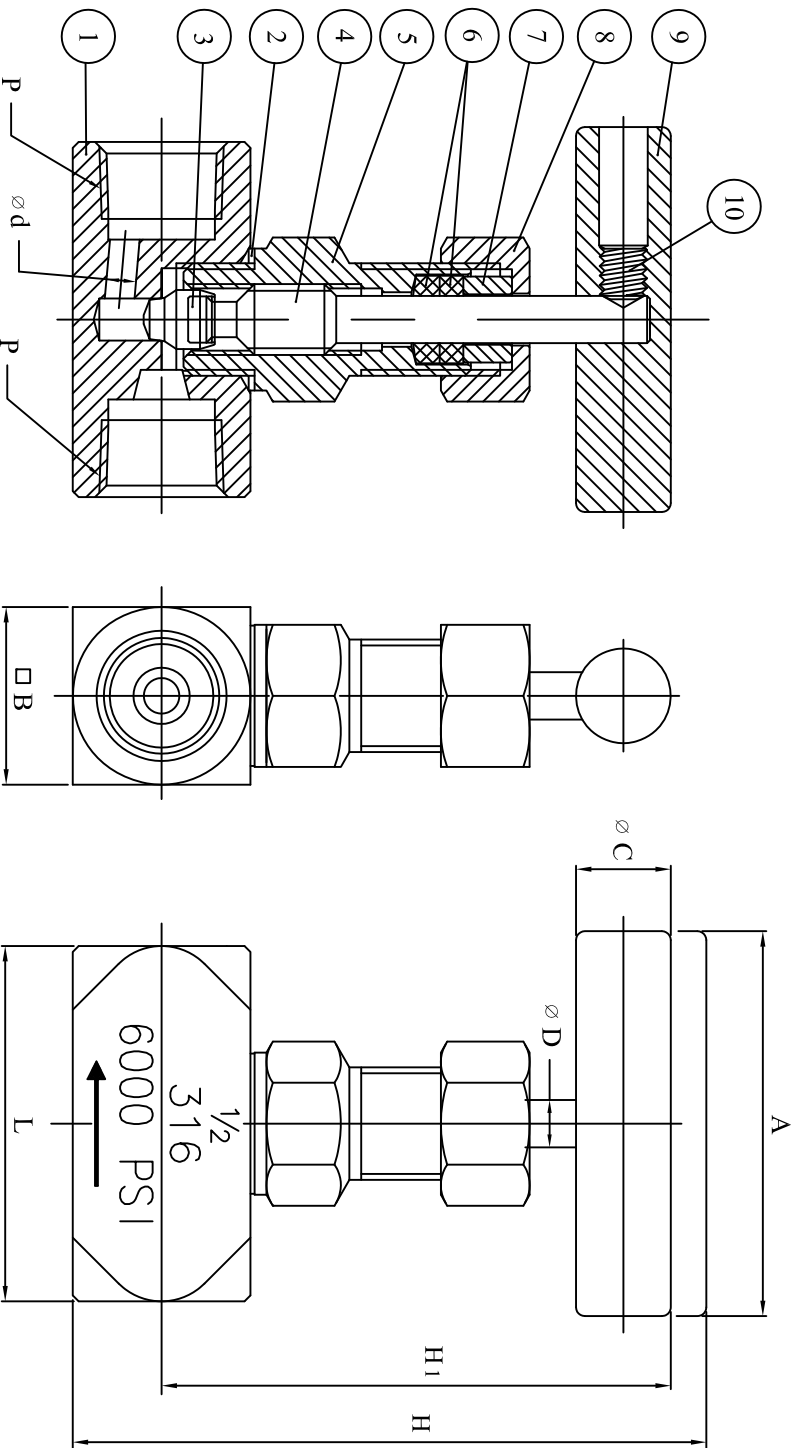


SIZE INCH	A	□ B	∅ C	∅ d	∅ D	H	H ₁	L	P	C _v FACTOR
1/8"	60	22	13	3	7	82	65	45	1/8"	0.4
1/4"	60	22	13	3	7	82	65	45	1/4"	0.4
3/8"	60	25	13	3	7	85	67	50	3/8"	0.4
1/2"	65	30	16	5	8	107	86	60	1/2"	0.75
3/4"	65	35	16	5	8	111	88	65	3/4"	0.9
1"	80	46	19	7	10	130	100	83	1"	1.8



NO	DESCRIPTION	GN-106	GN-106C
1	BODY	SS 316	CARBON STEEL
2	BODY SEAL	PTFE	PTFE
3	DISC	SS 316	SS 316
4	STEM	SS 316	SS 316
5	BONNET	SS 316	CARBON STEEL
6	PACKING	PTFE	PTFE
7	GLAND	SS 316	SS 316
8	PACKING NUT	SS 316	SS 316
9	HANDLE	SS 410	SS 410
10	FIXING SCREW	ALLOY STEEL	ALLOY STEEL



Rev.	A		
Checked	Morris	Date	2008/11/19
Designer	Kevin	Scale	Fit
Drawn	Kevin	Dwg_No.	VT-ND
		Type	VT-ND
			VT-GN-106(6000PSI)_019
		Describe	NEEDLE VALVE