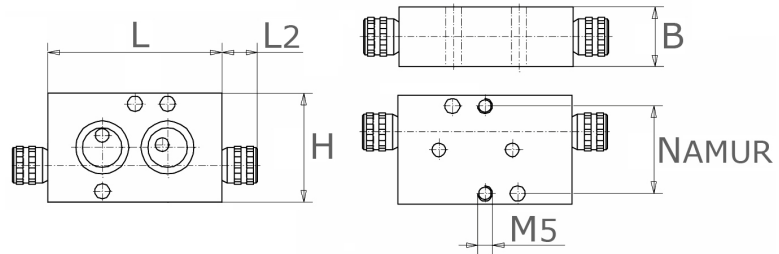


throttle plate NAMUR  
for 5/2- or 3/2-way valve

[short name: DP.\\*](#)

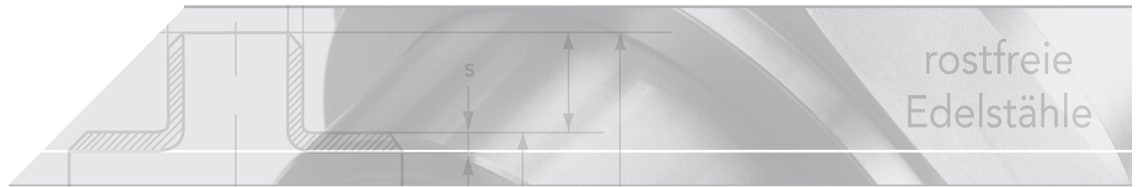


### technical product sheet

Typ	L	L2	B	H	kg	Art.-Nr.
5/2 Wege	64	13	22	40	0,194	DP-5/2-000
3/2 Wege (mit Adapterplatte)	64	13	22	40	0,191	DP-3/2-000

available material: ask

Industrial valves > ball valves > with actuator > pneumatic > accessories > silencers > throttle plates



Adjustable Namur throttle plate for installation between the solenoid valve and the Namur interface on the actuator.

#### 5/2-way:

- > For regulating the forward and backward motion of double-action actuators
- > Activated using a thumb screw
- > Anodized aluminum housing
- > Seals made of NBR
- > Minimal outside dimensions

#### 3/2-way:

- > For regulating the forward motion on single-action pneumatic actuators and for regulating the air flowing out in the spring space
- > Activated using a thumb screw
- > Anodized aluminum housing
- > Seals made of NBR
- > Minimal outside dimensions