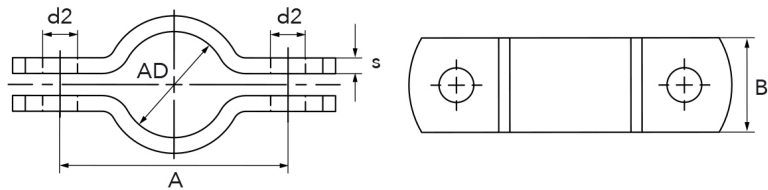


Rohrschelle DIN 3567, Form A
(schwere Ausführung)

[Kurzbezeichnung: SCS*](#)



Technisches Produktblatt

DN	Rohr-AD	B	s	A	d2	SB	kg	Art.-Nr.
15	18-19	30	5	50	9,0	M8x25	0,156	SC-018-00S
15	21,3	30	5	59	11,5	M10x30	0,200	SC-021-00S
20	25,0	30	5	62	11,5	M10x30	0,191	SC-025-00S
20	26,9	30	5	66	11,5	M10x30	0,200	SC-026-00S
25	28-29	30	5	68	11,5	M10x30	0,210	SC-029-00S
25	33,7	30	5	72	11,5	M10x30	0,225	SC-033-00S
32	35-36	30	5	74	11,5	M10x30	0,235	SC-036-00S
32	38,0	30	5	76	11,5	M10x30	0,224	SC-038-00S
32	42,4	30	5	82	11,5	M10x30	0,260	SC-042-00S
40	43-45	30	5	84	11,5	M10x30	0,262	SC-044-00S
40	48,3	30	5	88	11,5	M10x30	0,283	SC-048-00S
50	53-57	40	6	104	14,0	M12x35	0,527	SC-054-00S
50	60,3	40	6	108	14,0	M12x35	0,540	SC-060-00S
65	68-70	40	6	122	14,0	M12x35	0,580	SC-070-00S
65	76,1	40	6	122	14,0	M12x35	0,676	SC-076-00S
80	83-85	40	6	136	14,0	M12x35	0,682	SC-084-00S
80	88,9	40	6	136	14,0	M12x35	0,736	SC-088-00S
100	103-108	50	8	172	18,0	M16x45	1,461	SC-104-00S
100	114,3	50	8	178	18,0	M16x45	1,530	SC-114-00S
125	128-133	50	8	196	18,0	M16x45	1,659	SC-129-00S
125	139,7	50	8	204	18,0	M16x45	1,775	SC-139-00S
150	153-155	50	8	222	18,0	M16x45	1,920	SC-154-00S
150	159,0	50	8	222	18,0	M16x45	1,948	SC-159-00S
150	168,3	50	8	232	18,0	M16x45	2,023	SC-168-00S
175	176-180	50	8	243	18,0	M16x45	1,067	SC-180-00S
175	194,0	50	8	258	18,0	M16x45	2,200	SC-194-00S
200	204-206	50	8	280	18,0	M16x45	2,315	SC-204-00S
200	219,1	50	8	284	18,0	M16x45	2,560	SC-219-00S
250	254-256	60	8	342	23,0	M20x50	3,602	SC-254-00S
250	273,0	60	8	348	23,0	M20x50	3,700	SC-273-00S
300	304-308	60	8	381	23,0	M20x50	3,904	SC-304-00S
300	323,9	60	8	398	23,0	M20x50	4,500	SC-323-00S
350	354-358	60	8	444	23,0	M20x50	4,352	SC-355-00S
400	404-410	70	10	498	27,0	M24x60	8,300	SC-406-00S
450	454-460	70	10	548	27,0	M24x60	9,000	SC-457-00S
500	506-512	70	10	614	27,0	M24x60	10,000	SC-508-00S

DN	Rohr-AD	B	s	A	d2	SB	kg	Art.-Nr.
600	606-612	70	10	710	27,0	M24x60	11,120	SC-609-00S
700	706-712	70	10	812	27,0	M24x60	13,000	SC-711-00S
800	806-813	70	10	913	27,0	M24x60	15,020	SC-812-00S
900	908-916	90	10	1030	33,0	M30x70	22,000	SC-914-00S
1000	1008-1016	90	10	1130	33,0	M30x70	0,000	SC-A16-00S

Verfügbare Werkstoffe: 1.4301, V4A

Montagematerial > Rohrschellen > schwer (DIN 3567)

*Tipp: Die Eingabe der [Kurzbezeichnung](#) in das Suchfeld auf unserer Website ermöglicht Ihnen den Direktaufruf einer Artikelgruppe. Alternativ [hier klicken](#)