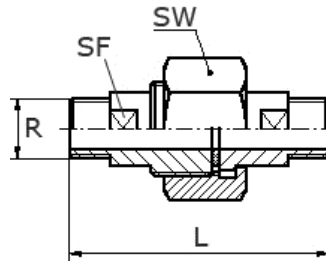




union flat, M/M
with PTFE seal

[short name: VVF.AA*](#)

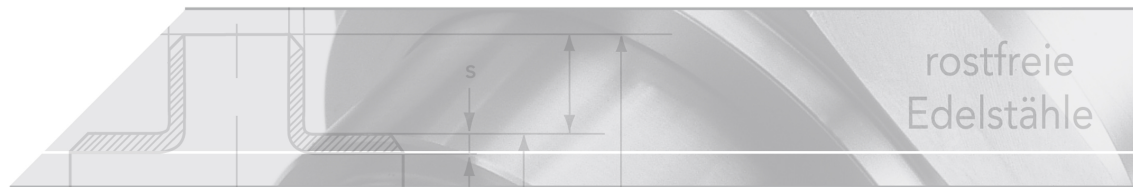


technical product sheet

R	L	SW	SF	kg	Art.-Nr.
1/4"	55	27	optional	0,276	VF-014-0AA
3/8"	60	32	optional	0,130	VF-038-0AA
1/2"	67	41	optional	0,107	VF-012-0AA
3/4"	79	50	optional	0,445	VF-034-0AA
1"	84	55	optional	0,635	VF-100-0AA
1 1/4"	91	70	optional	0,000	VF-114-0AA
1 1/2"	98	75	optional	0,770	VF-112-0AA
2"	109	85	optional	1,371	VF-200-0AA

available material: ask

Threaded fittings > unions > flat seat > PN 50/ 100 > "inches"-union nut > M / M



Threaded connection, Outside/Outside, flat seal

Description

Whitworth-Pipe thread DIN2999 (R, BSPT)

Parts that come into contact with media: material No. 1.4571 union nut V2A or 1.4571

Turned design, made from a solid material

The scope of delivery includes a PTFE flat packing

optional: cast union nut (V4A)

optional: flats at an extra charge