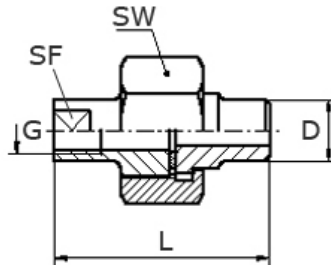
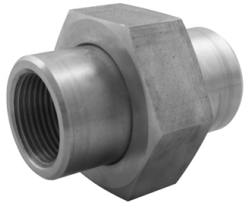


union flat, F/BW

[short name: VVF.IS\\*](#)

with PTFE seal

(butt weld end on insert part)



### technical product sheet

G	D	L	SW	SF	kg	Art.-Nr.
1/4"	13,5	42	27	optional	0,000	VF-014-0IS
1/2"	21,3	52	41	optional	0,160	VF-012-0IS
3/4"	26,9	57	50	optional	0,400	VF-034-0IS
1"	33,7	59	55	optional	0,449	VF-100-0IS
1 1/4"	42,4	70	65	optional	0,720	VF-114-0IS
1 1/2"	48,3	75	70	optional	0,908	VF-112-0IS
2"	60,3	78	85	optional	1,390	VF-200-0IS

available material: 1.4571

Threaded fittings > unions > flat seat > PN 50/ 100 > "inches"-union nut > F / BW



Union, inner thread/ welding end  
flat sealing

#### Description

Whitworth-pipe thread acc. to DIN/ISO 228-G

PTFE seal

parts that come into contact with media: material no. 1.4571 union nut V2A or 1.4571

turned design, made from a solid material

butt weld end on insert part

optional: cask union nut (V4A)

optional: flats at an extra charge