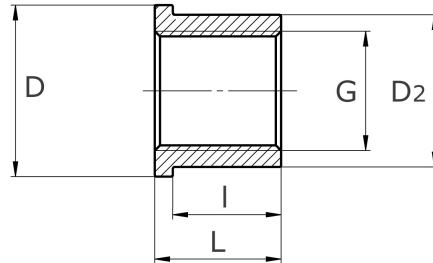




insert part, flat
with female thread

[short name: VFEI*](#)



technical product sheet

G	L	I	Mutter	D	D2	Art.-Nr.
1/8"	18		passend zu 1/2"		14	VFEI-018-000-4
1/4"	19		passend zu 5/8"		18	VFEI-014-000-4
3/8"	21		passend zu 3/4"		21	VFEI-038-000-2
3/8"	21		passend zu 3/4"		21	VFEI-038-000-4
1/2"	25	21	passend zu 1"	30,0	30	VFEI-012-000-4
1/2"	25	21	passend zu 1"	30,0	30	VFEI-012-000-N
3/4"	28	24	passend zu 1 1/4"	38,0	34	VFEI-034-000-2
3/4"	28	24	passend zu 1 1/4"	38,0	34	VFEI-034-000-4
3/4"	28	24	passend zu 1 1/4"	38,0	34	VFEI-034-000-N
1"	30		passend zu 1 1/2"		40	VFEI-100-000-2
1"	30		passend zu 1 1/2"		40	VFEI-100-000-4
1"	30		passend zu 1 1/2"		40	VFEI-100-000-N
1 1/4"			passend zu 2"			VFEI-114-000-1
1 1/4"			passend zu 2"			VFEI-114-000-4
1 1/4"			passend zu 2"			VFEI-114-000-N
1 1/2"			passend zu 2 1/4"			VFEI-112-000-2
1 1/2"			passend zu 2 1/4"			VFEI-112-000-4
2"	40		passend zu 2 3/4"		70	VFEI-200-000-1
2"	40		passend zu 2 3/4"		70	VFEI-200-000-4
2 1/2"	42		passend zu 3 1/4"			VFEI-212-000-4

available material: 1.4404

Threaded fittings > unions > flat seat > PN 50/ 100 > "inches"-union nut > individual parts > insert parts > with female thread