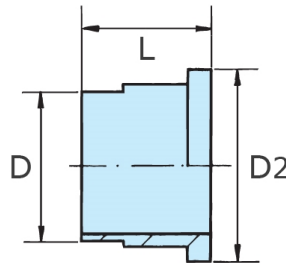
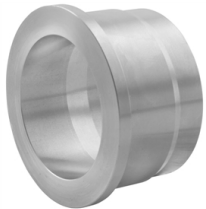




insert part, for welding
flat seat

[short name: ET.S*](#)



technical product sheet

Zoll	DN	D	D2	L	Art.-Nr.
3/8"	10	17,2	20,0	19,1	ET-038-F0S
1/2"	15	21,3	24,0	21,0	ET-012-F0S
3/4"	20	26,9	30,0	25,1	ET-034-F0S
1"	25	33,7	38,0	30,0	ET-100-F0S
1 1/4"	32	42,4	50,0	30,0	ET-114-F0S
1 1/2"	40	48,3	56,0	32,0	ET-112-F0S
2"	50	60,3	70,0	31,0	ET-200-F0S
2 1/2"	65	76,1			ET-212-F0S

available material: 1.4571

Threaded fittings > unions > flat seat > PN 50/ 100 > "inches"-union nut > individual parts > insert parts > with butt weld end