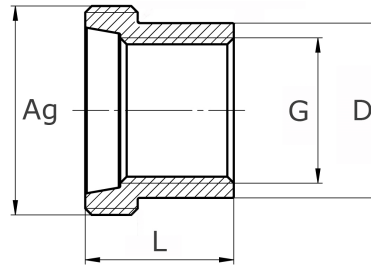




screw-in part conical

 short name: [VKGI*](#)


technical product sheet

G	L	Mutter	D	Art.-Nr.
3/8"	25	passend zu 3/4"	21,2	VKGI-038-000-4
1/2"	92	passend zu 1"	27,0	VKGI-012-000-4
1/2"	92	passend zu 1"	27,0	VKGI-012-000-N
3/4"	32	passend zu 1 1/4"	34,2	VKGI-034-000-4
1"	34	passend zu 1 1/2"	40,0	VKGI-100-000-4
1"	34	passend zu 1 1/2"	40,0	VKGI-100-000-N
1 1/4"	38	passend zu 2"	50,0	VKGI-114-000-4
1 1/4"	38	passend zu 2"	50,0	VKGI-114-000-N
1 1/2"	40	passend zu 2 1/4"	57,1	VKGI-112-000-4
1 1/2"	40	passend zu 2 1/4"	57,1	VKGI-112-000-N
2"	45	passend zu 2 3/4"	70,0	VKGI-200-000-N
2"	45	passend zu 2 3/4"	70,1	VKGI-200-000-4
3"		passend zu 3 3/4"		VKGI-300-000-4

available material: 1.4404

Threaded fittings > unions > conical seat > PN 50/ 100 > "inches"- union nuts > individual parts/ kit > screw-in parts > with female thread