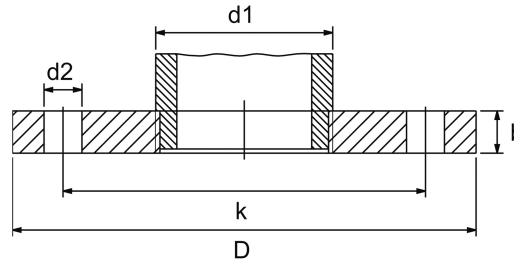


blind flange

short name: BFGB*

similar to DIN 2527/B

with central threaded hole



technical product sheet

| PN | DN | Gew. | Zoll | d1 | D | k | b | d2 | Anz |
|----|-----|------|--------|------|-----|-----|----|----|-----|
| 16 | 15 | G | 1/4" | 13,5 | 95 | 65 | 14 | 14 | 4 |
| 16 | 15 | G | 1/2" | 21,3 | 95 | 65 | 14 | 14 | 4 |
| 16 | 15 | G | 3/4" | 26,9 | 95 | 65 | 14 | 14 | 4 |
| 16 | 15 | G | 1" | 33,7 | 95 | 65 | 14 | 14 | 4 |
| 16 | 20 | G | 1/2" | 21,3 | 105 | 75 | 16 | 14 | 4 |
| 16 | 20 | G | 3/4" | 26,9 | 105 | 75 | 16 | 14 | 4 |
| 16 | 20 | G | 1" | 33,7 | 105 | 75 | 16 | 14 | 4 |
| 16 | 25 | G | 3/8" | 17,2 | 115 | 85 | 18 | 14 | 4 |
| 16 | 25 | G | 1/2" | 21,3 | 115 | 85 | 18 | 14 | 4 |
| 16 | 25 | G | 3/4" | 26,9 | 115 | 85 | 16 | 14 | 4 |
| 16 | 25 | G | 1" | 33,7 | 115 | 85 | 18 | 14 | 4 |
| 16 | 25 | G | 1 1/2" | 48,3 | 115 | 85 | 18 | 14 | 4 |
| 16 | 32 | G | 1" | 33,7 | 140 | 100 | 16 | 18 | 4 |
| 16 | 32 | G | 1 1/4" | 42,4 | 140 | 100 | 16 | 18 | 4 |
| 16 | 40 | G | 1" | 33,7 | 150 | 110 | 16 | 18 | 4 |
| 16 | 40 | G | 1 1/2" | 48,3 | 150 | 110 | 16 | 18 | 4 |
| 16 | 40 | G | 2" | 60,3 | 150 | 110 | 16 | 18 | 4 |
| 16 | 50 | G | 1/2" | 21,3 | 165 | 125 | 18 | 18 | 4 |
| 16 | 50 | G | 3/4" | 26,9 | 165 | 125 | 18 | 18 | 4 |
| 16 | 50 | G | 1" | 33,7 | 165 | 125 | 18 | 18 | 4 |
| 16 | 50 | G | 1 1/4" | 42,4 | 165 | 125 | 18 | 18 | 4 |
| 16 | 50 | G | 1 1/2" | 48,3 | 165 | 125 | 18 | 18 | 4 |
| 16 | 50 | G | 2" | 60,3 | 165 | 125 | 18 | 18 | 4 |
| 16 | 65 | G | 3/8" | 17,2 | 185 | 145 | 18 | 18 | 4 |
| 16 | 65 | G | 3/4" | 26,9 | 185 | 145 | 18 | 18 | 4 |
| 16 | 65 | G | 1" | 33,7 | 185 | 145 | 18 | 18 | 4 |
| 16 | 65 | G | 1 1/2" | 48,3 | 185 | 145 | 18 | 18 | 4 |
| 16 | 65 | G | 2" | 60,3 | 185 | 145 | 18 | 18 | 4 |
| 16 | 65 | G | 2 1/2" | 76,1 | 185 | 145 | 18 | 18 | 4 |
| 16 | 80 | G | 3/4" | 26,9 | 200 | 160 | 20 | 18 | 8 |
| 16 | 80 | G | 1" | 33,7 | 200 | 160 | 20 | 18 | 8 |
| 16 | 80 | G | 1 1/2" | 48,3 | 200 | 160 | 20 | 18 | 8 |
| 16 | 80 | G | 2" | 60,3 | 200 | 160 | 20 | 18 | 8 |
| 16 | 80 | G | 2 1/2" | 76,1 | 200 | 160 | 20 | 18 | 8 |
| 16 | 100 | G | 3/4" | 26,9 | 220 | 180 | 20 | 18 | 8 |
| 16 | 100 | G | 1" | 33,7 | 220 | 180 | 20 | 18 | 8 |

| PN | DN | Gew. | Zoll | d1 | D | k | b | d2 | Anz |
|----|-----|------|--------|------|-----|-----|----|----|-----|
| 16 | 100 | G | 1 1/2" | 48,3 | 220 | 180 | 20 | 18 | 8 |
| 16 | 100 | G | 2 1/2" | 76,1 | 220 | 180 | 20 | 18 | 8 |
| 16 | 100 | G | 3" | 88,9 | 220 | 180 | 20 | 18 | 8 |
| 16 | 150 | G | 1" | 33,7 | 285 | 240 | 22 | 22 | 8 |
| 16 | 150 | G | 1 1/2" | 48,3 | 285 | 240 | 22 | 22 | 8 |
| 16 | 150 | G | 2" | 60,3 | 285 | 240 | 22 | 22 | 8 |

available material: 1.4571

Flanges > blind flanges > with central hole > with threaded hole