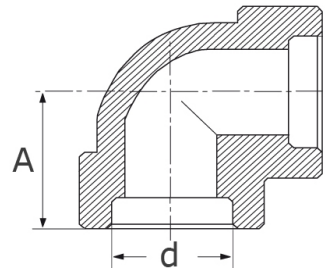


elbow 90° sw, 3000 lbs  
high pressure-fitting  
ASME B 16.11, ASTM-A 182

[short name: SWWI\\*](#)



#### technical product sheet

| Zoll   | d    | A  | Art.-Nr.             |
|--------|------|----|----------------------|
| 1/4"   | 14,4 | 21 | ANSI-SWWI-014-3000-N |
| 3/8"   | 17,8 | 25 | ANSI-SWWI-038-3000-N |
| 1/2"   | 22,0 | 28 | ANSI-SWWI-012-3000-N |
| 3/4"   | 27,4 | 34 | ANSI-SWWI-034-3000-N |
| 1"     | 34,1 | 36 | ANSI-SWWI-100-3000-N |
| 1 1/4" | 42,9 | 45 | ANSI-SWWI-114-3000-N |
| 1 1/2" | 49,0 | 50 | ANSI-SWWI-112-3000-N |
| 2"     | 61,5 | 58 | ANSI-SWWI-200-3000-N |

available material: ask

Butt welding fittings > ANSI / ASME > socket welding fittings > elbows 90°