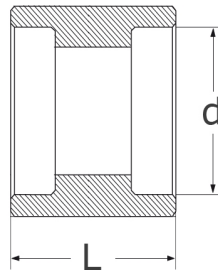
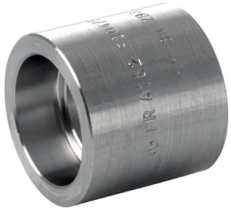


coupling socket weld, 3000 lbs  
 high pressure-fitting  
 ASME B 16.11, ASTM-A 182

[short name: SWMU\\*](#)



technical product sheet

Zoll	d	L	Art.-Nr.
1/4"	14,4	26	ANSI-SWMU-014-3000-N
3/8"	17,8	26	ANSI-SWMU-038-3000-N
1/2"	22,0	30	ANSI-SWMU-012-3000-N
3/4"	27,4	35	ANSI-SWMU-034-3000-N
1"	34,9	38	ANSI-SWMU-100-3000-N
1 1/4"	42,9	38	ANSI-SWMU-114-3000-N
1 1/2"	49,0	38	ANSI-SWMU-112-3000-N
2"	61,5	47	ANSI-SWMU-200-3000-N

available material: ask

Butt welding fittings > ANSI / ASME > socket welding fittings > couplings