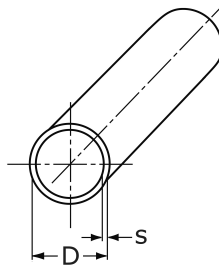
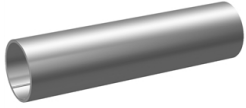


welded tube, annealed

[short name: RO- -G\\*](#)

EN 10217-7/ tol. EN 1127 D2/T3



### technical product sheet

D	s	kg	Art.-Nr.
219,1	3,0	16,330	RO-219-G30
273,0	3,0	20,290	RO-273-G30
273,0	4,0	26,949	RO-273-G40
323,9	3,0	24,100	RO-323-G30

available material: ask

Installation supplies &gt; tubes &gt; round &gt; welded &gt; ISO-dimensions &gt; DN &gt; 150, annealed