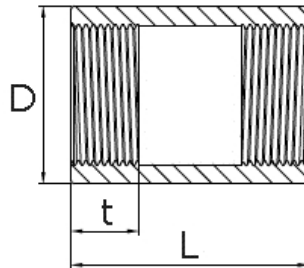
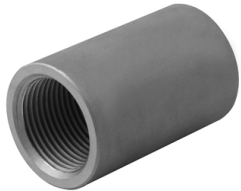


socket

[short name: NPT.MU*](#)


technical product sheet

NPT	L	D	t	kg
1/8"	25,4	14,0	6,35	0,013
1/4"	25,0	18,5	8,13	0,021
1/4"	30,0	18,5	8,13	0,030
1/4"	35,0	18,5	8,13	0,040
3/8"	26,0	21,5	10,50	0,034
1/2"	34,0	26,4	10,92	0,000
1/2"	34,0	28,0	10,92	0,080
1/2"	47,6	26,4	10,92	0,080
3/4"	35,0	31,8	12,70	0,142
3/4"	36,0	31,8	12,70	0,043
3/4"	50,8	31,8	12,70	0,249
1"	43,0	39,5	14,73	0,333
1"	60,3	39,5	14,73	0,157
1 1/4"	66,7	48,3	17,02	0,291
1 1/2"	25,0	70,0	17,78	0,435
1 1/2"	48,0	54,5	17,78	0,246
1 1/2"	79,4	54,5	17,78	0,351
2"	85,7	66,3	19,05	0,354
2"	90,0	66,3	19,05	0,000
2 1/2"	65,0	82,0	28,90	0,672
2 1/2"	65,0	90,0	28,90	1,335
3"	72,0	95,0	30,50	0,686
3"	80,7	95,0	30,50	1,573

available material: 1.4571

Threaded fittings > fittings > PN 10 (ECO-Line) > ...with NPT-thread > sockets > special versions