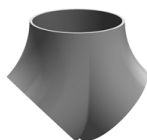


koleno tvaru Y, svařované
ze dvou kolen 45° typ 5
($R=2,5 \times D$)

[zkratka označení: HB45*](#)



technický list výrobku

| D | s | r | Art.-Nr. |
|-------|-----|-------|---------------|
| 42,4 | 2,0 | 93,0 | HB45-042X20-J |
| 48,3 | 2,0 | 108,0 | HB45-048X20-4 |
| 48,3 | 2,0 | 108,0 | HB45-048X20-J |
| 60,3 | 2,0 | 135,0 | HB45-060X20-J |
| 76,1 | 2,0 | 175,0 | HB45-076X20-J |
| 114,3 | 2,0 | 270,0 | HB45-114X20-J |
| 114,3 | 2,6 | 270,0 | HB45-114X26-4 |
| 114,3 | 2,9 | 270,0 | HB45-114X29-2 |
| 139,7 | 2,6 | 330,0 | HB45-139X26-J |
| 139,7 | 3,0 | 330,0 | HB45-139X30-4 |
| 139,7 | 3,0 | 330,0 | HB45-139X30-J |
| 154,0 | 2,0 | 225,0 | HB45-154X20-2 |
| 154,0 | 2,0 | 225,0 | HB45-154X20-4 |
| 168,3 | 2,6 | 390,0 | HB45-168X26-4 |
| 168,3 | 2,6 | 390,0 | HB45-168X26-J |
| 168,3 | 3,0 | 390,0 | HB45-168X30-4 |
| 168,3 | 3,0 | 390,0 | HB45-168X30-J |
| 219,0 | 3,0 | 510,0 | HB45-219X30-J |
| 219,1 | 3,0 | 510,0 | HB45-219X30-4 |
| 219,1 | 4,0 | 510,0 | HB45-219X40-4 |
| 273,0 | 3,0 | 625,0 | HB45-273X30-4 |
| 323,9 | 3,0 | 775,0 | HB45-323X30-4 |

dostupné jakosti: na poptávku

Přivařovací fitinky > koleno tvaru T a Y > koleno tvaru Y > 45°