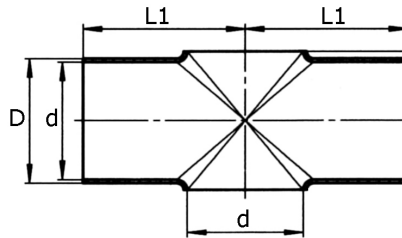
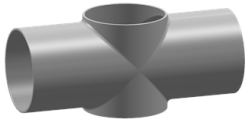


cross-piece, short  
butt weld ends, no. 575

[short name: 575\\*](#)



### technical product sheet

O	DN	D	s	L	d	L1	L2	Art.-Nr.
matt	10	13,0	1,5	52	10	26,0	8,5	KR-010-575
matt	15	19,0	1,5	70	16	35,0	11,0	KR-015-575
matt	20	23,0	1,5	80	20	40,0	13,0	KR-020-575
matt	25	29,0	1,5	100	26	50,0	16,0	KR-025-575
matt	32	35,0	1,5	110	32	55,0	19,5	KR-032-575
matt	40	41,0	1,5	120	38	60,0	23,0	KR-040-575
matt	50	53,0	1,5	140	50	70,0	30,0	KR-050-575
matt	65	70,0	2,0	160	66	80,0	40,0	KR-065-575
matt	80	85,0	2,0	180	81	90,0	47,5	KR-080-575
matt	100	104,0	2,0	200	100	100,0	58,0	KR-100-575
matt	125	129,0	2,0	375	125	187,5	74,0	KR-125-575
matt	150	154,0	2,0	450	150	225,0	90,0	KR-150-575
matt	200	204,0	2,0	600	200	300,0	115,0	KR-200-575
poliert	10	13,0	1,5	52	10	26,0	8,5	GL-575-010
poliert	15	19,0	1,5	70	16	35,0	11,0	GL-575-015
poliert	20	23,0	1,5	80	20	40,0	13,0	GL-575-020
poliert	25	29,0	1,5	100	26	50,0	16,0	GL-575-025
poliert	32	35,0	1,5	110	32	55,0	19,5	GL-575-032
poliert	40	41,0	1,5	120	38	60,0	23,0	GL-575-040
poliert	50	53,0	1,5	140	50	70,0	30,0	GL-575-050
poliert	65	70,0	2,0	160	66	80,0	40,0	GL-575-065
poliert	80	85,0	2,0	180	81	90,0	47,5	GL-575-080
poliert	100	104,0	2,0	200	100	100,0	58,0	GL-575-100
poliert	125	129,0	2,0	375	125	185,7	74,0	GL-575-125
poliert	125	129,0	2,0	375	125	187,5	74,0	GL-575-125
poliert	150	154,0	2,0	450	150	225,0	90,0	GL-575-150
poliert	200	204,0	2,0	600	200	300,0	115,0	GL-575-200

available material: V4A

Beverage fittings > fittings > cross-pieces > short > equal



## Cross piece

for the food industry

## Materials

### V2A

AISI 304/ 304L - 1.4301/ 1.4306, 1.4307

### V4A

AISI 316L - 1.4404

## Surface

### Version

matt

polished

### Number

575

575p

