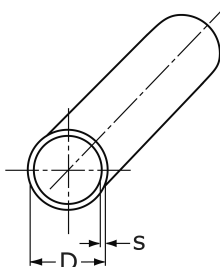
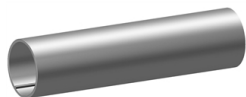


construction tube EN 10296-2

[short name: RO.HF*](#)

high frequency welded

tol. 1127



technical product sheet

D	s	kg	Art.-Nr.
12,0	1,0	0,275	RO-012-D10
12,0	1,5	0,394	RO-012-D15
12,0	2,0	0,500	RO-012-D20
13,5	1,6	0,000	RO-013-D16
15,0	1,0	0,351	RO-015-D10
15,0	1,5	0,508	RO-015-D15
15,0	2,0	0,651	RO-015-D20
17,2	1,5	0,000	RO-017-D15
17,2	2,5	0,911	RO-017-D25
18,0	1,0	0,426	RO-018-D10
18,0	1,5	0,620	RO-018-D15
20,0	1,0	0,476	RO-020-D10
20,0	1,2	0,565	RO-020-D12
20,0	2,0	0,901	RO-020-D20
21,3	2,0	0,970	RO-021-D20
22,0	1,0	0,526	RO-022-D10
22,0	1,2	0,629	RO-022-D12
22,0	1,5	0,770	RO-022-D15
25,0	1,0	0,601	RO-025-D10
25,0	1,2	0,715	RO-025-D12
25,0	1,5	0,883	RO-025-D15
25,0	3,0	1,660	RO-025-D30
26,9	1,5	0,954	RO-026-D15
26,9	2,0	1,247	RO-026-D20
26,9	2,5	1,587	RO-026-D25
26,9	3,0	1,945	RO-026-D30
28,0	1,5	0,995	RO-028-D15
28,0	2,5	1,600	RO-028-D25
30,0	1,0	0,730	RO-030-D10
30,0	1,5	1,070	RO-030-D15
32,0	1,0	0,800	RO-032-D10
32,0	1,5	1,146	RO-032-D15
32,0	3,0	2,178	RO-032-D30
33,7	2,0	1,588	RO-033-D20
33,7	2,5	1,953	RO-033-D25
33,7	3,0	2,306	RO-033-D30

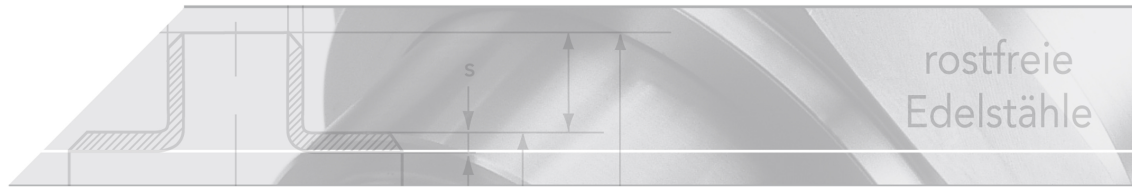
D	s	kg	Art.-Nr.
35,0	3,0	2,420	RO-035-D30
36,0	2,5	1,821	RO-036-D25
36,0	3,0	0,000	RO-036-D30
38,0	1,5	1,371	RO-038-D15
38,0	2,0	1,803	RO-038-D20
38,0	3,0	2,629	RO-038-D30
40,0	1,0	0,977	RO-040-D10
42,4	1,5	1,530	RO-042-D15
42,4	2,0	2,023	RO-042-D20
42,4	2,5	2,498	RO-042-D25
42,4	4,0	3,847	RO-042-D40
45,0	1,0	1,612	RO-045-D10
45,0	1,2	1,320	RO-045-D12
45,0	1,5	1,612	RO-045-D15
45,0	2,0	2,160	RO-045-D20
48,3	1,0	1,188	RO-048-D10
48,3	1,5	1,760	RO-048-D15
48,3	2,0	2,319	RO-048-D20
48,3	3,5	2,319	RO-048-D35
48,3	4,0	4,437	RO-048-D40
50,0	1,0	1,227	RO-050-D10
50,0	1,5	1,830	RO-050-D15
50,0	2,0	2,404	RO-050-D20
50,0	3,0	3,530	RO-050-D30
50,0	4,0	4,622	RO-050-D40
51,0	1,5	1,952	RO-051-D15
51,0	2,0	2,462	RO-051-D20
52,0	1,0	1,277	RO-052-D10
54,0	1,5	1,980	RO-054-D15
54,0	2,0	2,604	RO-054-D20
57,0	1,5	2,085	RO-057-D15
57,0	2,5	3,412	RO-057-D25
57,0	3,0	4,056	RO-057-D30
60,3	1,0	1,490	RO-060-D10
60,3	1,5	2,352	RO-060-D15
60,3	2,0	2,920	RO-060-D20
60,3	4,0	5,639	RO-060-D40
60,3	4,5	6,310	RO-060-D45
60,3	5,0	6,924	RO-060-D50
63,5	1,5	2,480	RO-063-D15
63,5	2,0	3,080	RO-063-D20
65,0	1,0	1,607	RO-065-D10
65,0	2,5	0,000	RO-065-D25
70,0	1,5	2,580	RO-070-D15
70,0	2,0	3,405	RO-070-D20
70,0	4,0	0,000	RO-070-D40
76,1	1,5	2,820	RO-076-D15
76,1	2,0	3,711	RO-076-D20
76,1	2,5	4,785	RO-076-D25
76,1	3,0	5,315	RO-076-D30
76,1	4,0	7,222	RO-076-D40
80,0	1,5	2,960	RO-080-D15
80,0	2,0	3,918	RO-080-D20
88,9	1,5	3,498	RO-088-D15
88,9	2,0	4,352	RO-088-D20
88,9	2,5	5,405	RO-088-D25
88,9	4,0	8,504	RO-088-D40
101,6	1,5	3,771	RO-101-D15

D	s	kg	Art.-Nr.
101,6	2,0	4,988	RO-101-D20
104,0	1,5	5,007	RO-104-D15
104,0	2,0	5,108	RO-104-D20
108,0	1,5	4,012	RO-108-D15
110,0	2,5	0,000	RO-110-D25
114,3	1,5	4,250	RO-114-D15
114,3	2,0	5,624	RO-114-D20
114,3	4,0	11,048	RO-114-D40
114,3	4,5	11,050	RO-114-D45
114,3	5,0	13,730	RO-114-D50
129,0	2,0	6,360	RO-129-D20
129,0	4,0	12,400	RO-129-D40
133,0	1,5	4,937	RO-133-D15
133,0	2,0	6,600	RO-133-D20
133,0	2,5	9,030	RO-133-D25
139,7	1,5	5,550	RO-139-D15
139,7	2,0	6,896	RO-139-D20
139,7	2,5	8,900	RO-139-D25
139,7	5,0	16,920	RO-139-D50
154,0	3,0	11,420	RO-154-D30
168,3	2,0	8,328	RO-168-D20

available material: ask

Installation supplies > tubes > round > welded > construction tubes

full description: construction tube EN 10296-2
high frequency welded
tol. 1127



HF construction tubes

acc. to EN 10296-2

Longitudinal seam high-frequency (HF) welded tubes are preferably manufactured using a 1.4301 (V2A) material.

This type of tube manufacture is the least expensive version and is used for construction and decoration tubes.

EN 10296-2

formerly DIN 17455

Quality standard for welded round tubes without special requirements.

EN ISO 1127

formerly DIN 2463

Tolerance/dimensional standard for welded stainless steel round tubes.

Outer diameter	Wall thickness
D1 = +/- 1,50%, min. +/- 0,75 mm	T1 = +/- 15,0%, min. +/- 0,60 mm
D2 = +/- 1,00%, min. +/- 0,50 mm	T2 = +/- 12,5%, min. +/- 0,40 mm
D3 = +/- 0,75%, min. +/- 0,30 mm	T3 = +/- 10,0%, min. +/- 0,20 mm
D4 = +/- 0,50%, min. +/- 0,10 mm	T4 = +/- 7,50%, min. +/- 0,15 mm

Standard to 28,0 mm = [D4]; to 101,6 mm = [D3]; from 114,3 mm = [D2]

Standard for wall thickness = [T3]

