

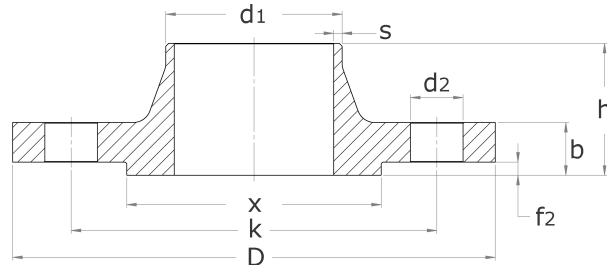
welding neck flange PN 100

[short name: FL100V*](#)

with male face

DIN 2637/ DIN 2513 Form V 13

EN 1092-1 Typ 11 Form F

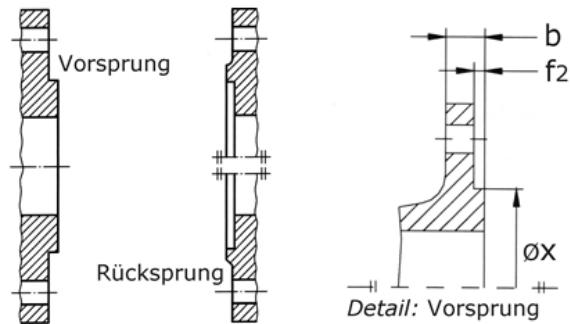
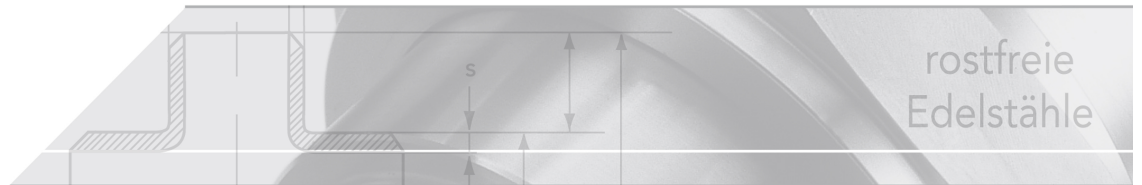


technical product sheet

DN	d1	D	k	d2	M	b	h	s	kg	Art.-Nr.
10	17,2	100	70	14	4 x M12	20	45	2,0	0,000	FL-017-VA0
15	21,3	105	75	14	4 x M12	20	45	3,2	0,000	FL-021-VA0
20	26,9	130	90	18	4 x M16	22	48	3,2	2,040	FL-026-VA0
25	33,7	140	100	18	4 x M16	24	58	2,6	2,432	FL-033-VA0
32	42,4	155	110	22	4 x M20	24	60	2,9	3,100	FL-042-VA0
40	48,3	170	125	22	4 x M20	26	62	2,9	3,840	FL-048-VA0
50	60,3	195	145	26	4 x M24	28	68	3,2	5,500	FL-060-VA0
65	76,1	220	170	26	8 x M24	30	76	4,0	0,000	FL-076-VA0
80	88,9	230	180	26	8 x M24	32	78	4,0	8,260	FL-088-VA0
100	114,3	265	210	30	8 x M27	36	90	5,6	4,600	FL-114-VA0
125	139,7	315	250	33	8 x M30	40	105	6,3	0,000	FL-139-VA0
150	168,3	355	290	33	12x M30	44	115	8,0	0,000	FL-168-VA0
200	219,1	430	360	36	12x M33	52	130	8,8	0,000	FL-219-VA0
250	273,0	505	430	39	12x M36	60	157	10,0	0,000	FL-273-VA0
300	323,9	585	500	42	16x M39	68	170	12,5	0,000	FL-323-VA0
350	355,6	655	560	48	16x M45	74	189	14,2	0,000	FL-355-VA0

available material: ask

Flanges > welding neck flanges > more sealing surfaces > M/F face > PN 100 > male face



Welding neck flange PN 100 acc. to DIN 2637 and EN 1092-1 Type 11

Seal surface with M face

Comparison of the designations according to the old DIN standard and the new EN 1092-1:

DIN 2513	EN 1092-1
Shape V 13	Shape E

Table of dimensions

DN	f2	Øx
10	4,5	34
15	4,5	39
20	4,5	50
25	4,5	57
32	4,5	65
40	4,5	75
50	4,5	87
65	4,5	109
80	4,5	120
100	5,0	149
125	5,0	175
150	5,0	203
200	5,0	259
250	5,0	312
300	5,0	363
350	5,5	421

Dimensions in mm

Comparison DIN 2636 and EN 1092-1

DN 20 and DN 32 were recently added to EN 1092-1.

In contrast to the DIN standard, EN-1092-1 only specifies the pipe connection dimensions of the ISO series. All dimensions in the ISO series are identical.