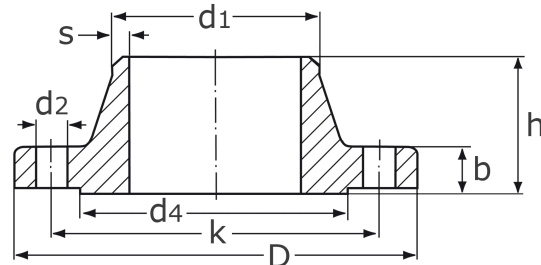


welding neck flange PN 160

[short name: FL.PN160*](#)

DIN 2638/E - EN 1092-1/B

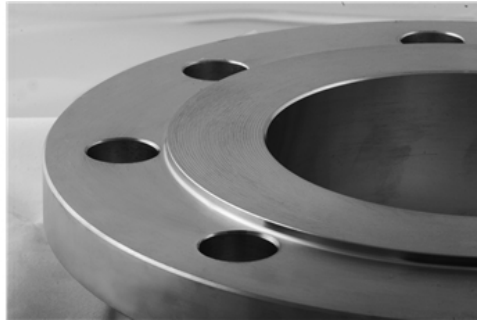


technical product sheet

DN	d1	D	k	d2	M	b	h	h3	N1	d4	f	s	Art.-Nr.
10	17,2	100	70	14	4 x M12	20	45	6	32	40	2	2,0	FL-017-160
15	21,3	105	75	14	4 x M12	20	45	6	34	45	2	2,0	FL-021-160
25	33,7	140	100	18	4 x M16	24	58	8	52	68	2	2,9	FL-033-160
40	48,3	170	125	22	4 x M20	28	64	10	70	88	3	3,6	FL-048-160
50	60,3	195	145	26	4 x M24	30	75	10	90	102	3	4,0	FL-060-160
65	76,1	220	170	26	8 x M24	34	82	12	108	122	3	5,0	FL-076-160
80	88,9	230	180	26	8 x M24	36	86	12	120	138	3	6,3	FL-088-160
100	114,3	265	210	30	8 x M27	40	100	12	150	162	3	8,0	FL-114-160
125	139,7	315	250	33	8 x M30	44	115	14	180	188	3	10,0	FL-139-160
150	168,3	355	290	33	12x M30	50	128	14	210	218	3	12,5	FL-168-160
200	219,1	430	360	36	12x M33	60	140	16	278	285	3	16,0	FL-219-160
250	273,0	515	430	42	12x M39	68	155	18	340	345	3	12,5	FL-273-160
300	323,9	585	500	42	16x M39	78	175	18	400	410	4	22,2	FL-323-160

available material: 1.4404

[Flanges](#) > [welding neck flanges](#) > [more pressure ranges](#) > [PN 160](#)



Seal surface with sealing face

B1: Standard seal surface for all PN

Machining	Ra (μm)	Rz (μm)
drilled	min. 3,2 / max. 12,5	min. 12,5/ max. 50

Comparison of the designations acc. to the old DIN standard and the new EN standard:

DIN 2526	EN 1092-1
Shape E	Shape B2 (only by arrangement!)

DN 20 and DN 32 were recently added to EN 1092-1.

In contrast to the DIN standard, EN-1092-1 only specifies the pipe connection dimensions of the ISO series.

Otherwise, all dimensions of DIN EN-1092-1 are identical to the old DIN 2638.

Nominal diameter	Sealing face height [f]*
DN < 40	2,0 mm
DN 50 - 250	3,0 mm
DN > 250	4,0 mm

