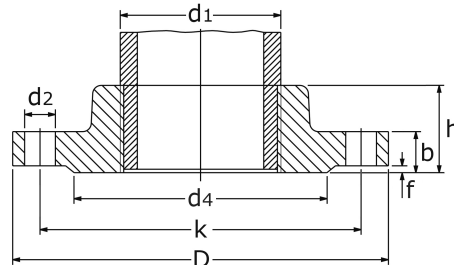


threaded flange PN 40

[short name: FG40*](#)

DIN 2567/C

EN 1092-1/B1 Type 13



technical product sheet

DN	d1	Rp	D	b	k	h	d2	M	f	d4	Art.-Nr.
10	17,2	3/8"	90	16	60	22	14	4 x M12	2,0	40	FG-038-040
15	21,3	1/2"	95	16	65	22	14	4 x M12	2,0	45	FG-012-040
20	26,9	3/4"	105	18	75	26	14	4 x M12	2,0	58	FG-034-040
25	33,7	1"	115	18	85	28	14	4 x M12	2,0	68	FG-100-040
32	42,4	1 1/4"	140	18	100	30	18	4 x M16	2,0	78	FG-114-040
40	48,3	1 1/2"	150	18	110	32	18	4 x M16	3,0	88	FG-112-040
50	60,3	2"	165	20	125	34	18	4 x M12	3,0	102	FG-200-040
50	60,3	2"	165	20	125	34	18	4 x M16	3,0	102	FG-200-040
65	76,1	2 1/2"	185	22	145	38	18	8 x M16	3,0	122	FG-212-040
80	88,9	3"	200	24	160	40	18	8 x M16	3,0	138	FG-300-040
100	114,3	4"	235	24	190	44	22	8 x M20	3,0	158	FG-400-040

available material: 1.4301, 1.4307, 1.4571

Flanges > threaded flanges > DIN / EN > PN 40



Threaded flange PN 40
with sealing face

Comparison DIN - EN

Standard

DIN (old)	EN (new)
DIN 2567	EN 1092-1 Type 13

Dimension range

DIN 2567	EN 1092-1
DN 6 to DN 100	DN 10 to DN 600

Designation of the gasket shape

DIN 2526	EN 1092-1
Shape C	Shape B1

Surface of the sealing face

Machining	Ra (μm)	Rz (μm)
rotated	min. 3,25 / max. 12,5	min. 12,5/ max. 50

Whitworth Thread

The flanges have cylindrical inner threads (code Rp according to ISO 7-1) and are suitable for screwing into threaded pipes and fittings with tapered (taper of 1:16) outer threads.

DIN (old)

DIN 2999

EN (new)

EN 10226

The threads are also referred to as British Standard Whitworth (BSW) and British Standard Fine (BSF) in Great Britain and as British Standard Pipe Thread (BSP-BSPT).

The Whitworth threads are measured in inches and have a 55° thread angle.

Rp	Number of threads*	Core-Ø
1/8"	28	8,566
1/4"	19	11,445
3/8"	19	14,950
1/2"	14	18,631
3/4"	14	24,117
1"	11	30,291
1 1/4"	11	38,652
1 1/2"	11	44,845
2"	11	56,656
2 1/2"	11	72,226
3"	11	84,926
4"	11	110,07
5"	11	135,47

(*) = the pitch is specified as the number of windings per inch of thread

