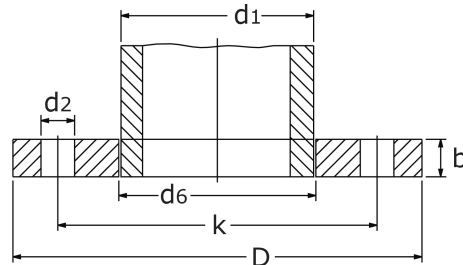


plate flange PN 40  
EN 1092-1 type 01/A

short name: [GF.40\\*](#)



### technical product sheet

DN	d1	D	k	d2	M	d6	b	kg	Art.-Nr.
10	17,2	90	60	14	4 x M12	18,0	14	0,603	GF-017-040
15	21,3	95	65	14	4 x M12	22,0	14	0,712	GF-021-040
20	26,9	105	75	14	4 x M12	27,5	16	0,952	GF-026-040
25	33,7	115	85	14	4 x M12	34,5	16	1,250	GF-033-040
32	42,4	140	100	18	4 x M16	43,5	18	1,910	GF-042-040
40	48,3	150	110	18	4 x M16	49,5	18	2,143	GF-048-040
50	60,3	165	125	18	4 x M16	61,5	20	2,789	GF-060-040
65	76,1	185	145	18	8 x M16	77,5	22	3,524	GF-076-040
80	88,9	200	160	18	8 x M16	90,5	24	4,478	GF-088-040
100	114,3	235	190	22	8 x M20	116,0	26	6,238	GF-114-040
125	139,7	270	220	26	8 x M24	141,5	28	8,356	GF-139-040
150	168,3	300	250	26	8 x M24	170,5	30	10,600	GF-168-040
200	219,1	375	320	30	12x M27	221,5	36	18,270	GF-219-040
250	273,0	450	385	33	12x M30	276,5	42	29,820	GF-273-040
300	323,9	515	450	33	16x M30	327,5	52	45,100	GF-323-040

available material: 1.4571, 304L, 316L

Flanges > plate flanges > DIN / EN > PN 40



## Plate flange PN 40 acc. to EN 1092-1 type 01

Glatte Dichtfläche - Form A

Machining	Ra ( $\mu\text{m}$ )	Rz ( $\mu\text{m}$ )
rotated	min. 3,25 / max. 12,5	min. 12,5/ max. 50

## Flange connection acc. to DIN 601

(fits to a pair of flanges)

Consisting of hexagon head screws (number of corresponding flange drill holes) 4-6 Mu DIN 601 and a gasket EN 1514 DIN 2690 (for example Klingersil C-4400).

DN	Number	Size
10	4	M 12 x 45
15	4	M 12 x 45
20	4	M 12 x 50
25	4	M 12 x 50
32	4	M 16 x 50
40	4	M 16 x 50
50	4	M 16 x 55
65	8	M 16 x 60
80	8	M 16 x 60
100	8	M 20 x 65
125	8	M 24 x 75
150	8	M 24 x 75
200	12	M 27 x 90
250	12	M 30 x 100
300	16	M 30 x 110
350	16	M 33 x 120
400	16	M 36 x 130