

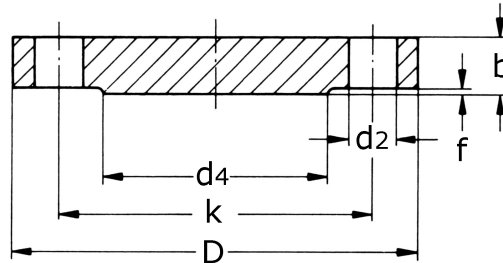
blind flange PN 160

[short name: BF.160*](#)

DIN 2527/E

EN 1092-1/B Type 05

EN 1092-1/B1 Typ 05

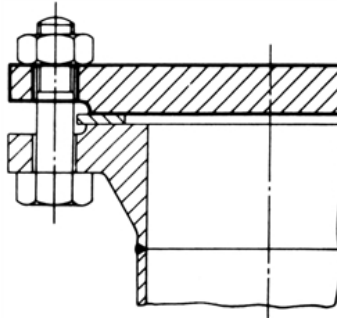
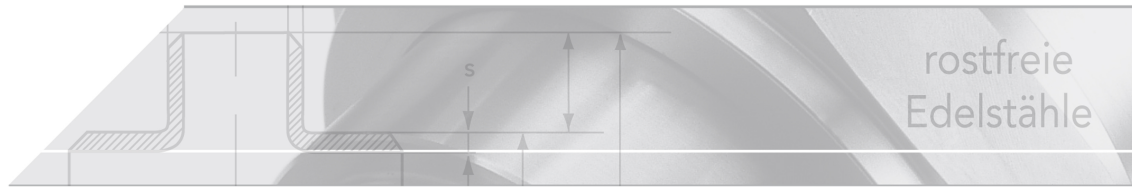


technical product sheet

DN	D	b	k	d4	f	M	d2	kg	Art.-Nr.
10	100	20	70	40	2,0	4 x M12	14	1,085	BF-010-160
15	105	20	75	45	2,0	4 x M12	14	1,220	BF-015-160
25	140	24	100	68	2,0	4 x M16	18	2,612	BF-025-160
40	170	28	125	88	3,0	4 x M20	22	4,100	BF-040-160
50	195	30	145	102	3,0	4 x M24	26	6,175	BF-050-160
65	220	34	170	122	3,0	8 x M24	26	8,080	BF-065-160
80	230	36	180	138	3,0	8 x M24	26	10,000	BF-080-160
100	265	40	210	162	3,0	8 x M27	30	15,280	BF-100-160
125	315	44	250	188	3,0	8 x M30	33	8,420	BF-125-160
150	355	50	290	218	3,0	12x M30	33	0,000	BF-150-160
200	430	60	360	285	3,0	12x M33	36	0,000	BF-200-160
250	515	68	430	345	3,0	12x M39	42	0,000	BF-250-160
300	585	78	500	410	4,0	16x M39	42	0,000	BF-300-160

available material: ask

Flanges > blind flanges > DIN / EN > more pressure ranges > PN 160



Blind flange PN 160

Dimensions based on DIN 2638 and EN 1092-1 Type 11

Seal surface with sealing face

B1: standard seal surface for all PN

Machining	Ra (µm)	Rz (µm)
rotated	min. 3,2 / max. 12,5	min. 12,5/ max. 50

Comparison of the designations according to the old DIN standard and the new EN 1092-1:

DIN 2526	EN 1092-1
Shape E	Shape B2 (only by arrangement!)