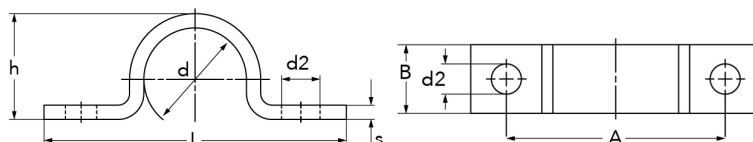


trubková objímka, 1-dílná  
provedení se dvěma konci  
s možností utažení

[zkratka označení: 1593\\*](#)



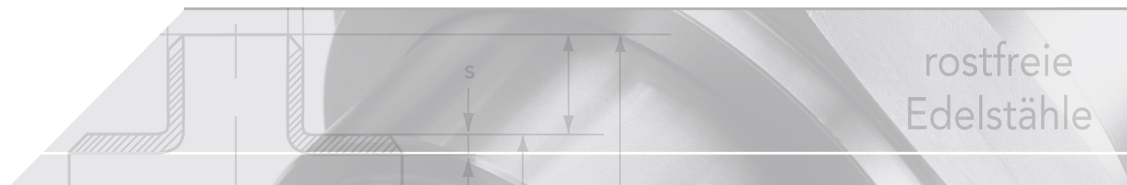
### technický list výrobku

Ausf	Norm	d	Rohr-AD	d2	h	L	A	B	s
leicht	DIN 1597	9,0	7-9	5,5	6	48	32	16	1,5
leicht	DIN 1597	13,0	9,5-13	5,5	9	52	36	16	1,5
leicht	DIN 1597	15,5	13-15,5	5,5	12	56	40	16	1,5
leicht	DIN 1597	19,0	15,5-19	5,5	15	60	44	16	1,5
leicht	DIN 1597	23,0	20-23	6,6	19	76	56	20	2,0
leicht	DIN 1597	26,0	23-26	6,6	22	78	58	20	2,0
leicht	DIN 1597	28,0	26-28,5	6,6	24	84	64	20	2,0
leicht	DIN 1597	31,0	28,5-31	6,6	27	84	64	20	2,0
leicht	DIN 1597	33,0	31-33	6,6	27	92	72	20	2,0
leicht	DIN 1597	36,0	33-36	9,0	32	104	80	25	3,0
leicht	DIN 1597	39,0	36-39	9,0	34	108	84	25	3,0
leicht	DIN 1597	43,0	39-43	9,0	38	112	88	25	3,0
leicht	DIN 1597	49,0	46-49	11,0	44	118	90	30	3,0
leicht	DIN 1597	52,0	49-52	11,0	47	134	106	30	3,0
leicht	DIN 1597	58,0	53-58	11,0	52	138	110	30	3,0
leicht	DIN 1597	61,0	58-61	11,0	56	138	110	30	3,0
schwer	DIN 1593	9,0	7-9	6,6	6	48	32	20	2,0
schwer	DIN 1593	13,0	9,5-13	6,6	9	52	36	20	2,0
schwer	DIN 1593	15,5	13-15,5	6,6	12	56	40	20	2,0
schwer	DIN 1593	19,0	15,5-19	6,6	15	60	44	20	2,0
schwer	DIN 1593	23,0	20-23	11,0	19	82	56	25	3,0
schwer	DIN 1593	26,0	23-26	11,0	22	84	58	25	3,0
schwer	DIN 1593	28,5	26-28,5	11,0	24	90	64	25	3,0
schwer	DIN 1593	31,0	28,5-31	11,0	27	90	64	25	3,0
schwer	DIN 1593	36,0	33-36	11,0	32	106	80	30	5,0
schwer	DIN 1593	39,0	36-39	11,0	34	110	84	30	5,0
schwer	DIN 1593	43,0	39-43	14,0	38	120	88	30	5,0
schwer	DIN 1593	46,0	43-46	14,0	41	122	90	30	5,0
schwer	DIN 1593	49,0	46-49	14,0	44	122	90	30	5,0
schwer	DIN 1593	58,0	53-58	14,0	52	142	110	40	5,0
schwer	DIN 1593	61,0	58-61	14,0	57	142	110	40	5,0
schwer	DIN 1593	71,0	67-71	14,0	66	152	120	40	5,0
schwer	DIN 1593	77,0	73-77	18,0	72	176	136	40	5,0
schwer	DIN 1593	81,0	77-81	18,0	76	184	144	40	5,0
schwer	DIN 1593	91,0	86-91	18,0	85	198	158	40	8,0
schwer	DIN 1593	103,0	99-103	18,0	98	214	174	40	8,0

Ausf	Norm	d	Rohr-AD	d2	h	L	A	B	s
schwer	DIN 1593	109,0	105-109	18,0	104	220	180	40	8,0
schwer	DIN 1593	115,0	110-115	18,0	109	226	186	40	8,0
schwer	ähn1. DIN	133,0	125-133	18,0	133	262	214	50	8,0
schwer	ähn1. DIN	140,0	139,7	18,0	140	270	222	50	8,0
schwer	ähn1. DIN	159,0	159,0	18,0	151	288	240	50	8,0
schwer	ähn1. DIN	168,0	168,3	18,0	169	298	250	50	8,0
schwer	ähn1. DIN	168,3	168,3	18,0	169	298	250	50	8,0
schwer	ähn1. DIN	169,0	168,3	18,0	161	298	250	50	8,0
schwer	ähn1. DIN	220,0	220,0	18,0	215	356	308	50	8,0
schwer	ähn1. DIN	273,0	273,0	23,0	266	405	345	60	8,0
schwer	ähn1. DIN	324,0	323,9	23,0	318	462	402	60	8,0
schwer	ähn1. DIN	407,0	406,4	27,0	400	570	498	70	10,0
schwer	ähn1. DIN	457,0	453-457	27,0	450	637	565	70	10,0

dostupné jakosti: 1.4301, V4A

Montážní materiál > trubkové objímky > jednodílná > provedení se dvěma konci



### clamps DIN 1593

for pipe and cable mounting

heavy version

one-piece

two connecting links

stainless steel V2A (1.4301) or V4A (1.4571); optional in galvanized steel version

starting with 133 mm similar to DIN 1593