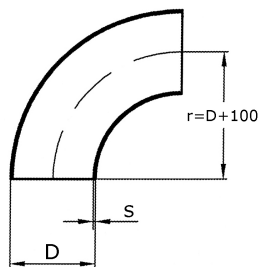
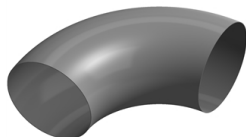


bend 90° R=D+100

[short name: B1.\\*](#)

welded, DIN 10253-3



## technical product sheet

D	s	kg	Art.-Nr.
206,0	3,0	7,300	B1-206-030
208,0	4,0	9,620	B1-208-040
254,0	2,0	8,540	B1-254-020
255,0	2,5	8,327	B1-255-025
256,0	3,0	10,500	B1-256-030
258,0	4,0	14,200	B1-258-040
304,0	2,0	10,600	B1-304-020
305,0	2,5	12,280	B1-305-025
306,0	3,0	14,300	B1-306-030
308,0	4,0	19,100	B1-308-040
355,0	2,5	18,750	B1-355-025
356,0	3,0	18,800	B1-356-030
358,0	4,0	19,700	B1-358-040
406,0	3,0	24,000	B1-406-030
408,0	4,0	32,500	B1-408-040
456,0	3,0	30,000	B1-456-030
458,0	4,0	0,000	B1-458-040
506,0	3,0	37,000	B1-506-030
508,0	3,0	0,000	B1-508-030
508,0	4,0	46,000	B1-508-040
606,0	3,0	49,000	B1-606-030
608,0	4,0	65,800	B1-608-040
609,6	4,0	76,600	B1-609-040
708,0	4,0	93,000	B1-708-040
808,0	4,0	0,000	B1-808-040

available material: 1.4307, 1.4571, 316L

Butt welding fittings &gt; bends &gt; welded &gt; radius=D+100 &gt; 90°

