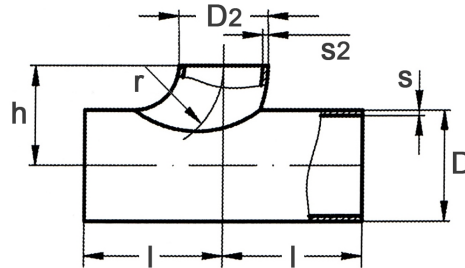
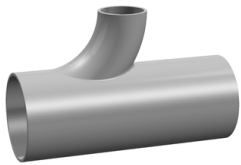


T-bend reduced

[short name: RTBO*](#)



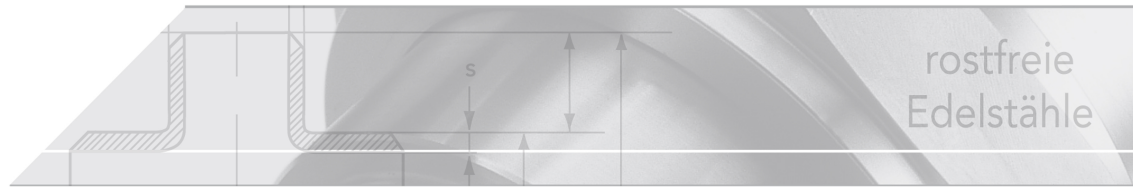
technical product sheet

D	D2	s	s2	L	l	r	h
33,7	21,3	2,0	2,0	76,0	38	28,0	34,0
42,4	21,3	2,0	2,0	96,0	48	28,0	35,2
42,4	26,9	2,0	2,0	96,0	48	29,0	36,7
48,3	21,3	2,0	2,0	114,0	57	28,0	41,5
48,3	26,9	2,0	2,0	114,0	57	29,0	39,2
48,3	33,7	2,0	2,0	114,0	57	38,0	45,3
60,3	33,7	2,0	2,0	152,0	76	38,0	51,0
60,3	42,4	2,0	2,0	152,0	76	48,0	57,0
60,3	48,3	2,0	2,0	152,0	76	57,0	63,0
60,3	48,3	2,6	2,6	152,0	76	57,0	63,0
76,1	42,4	2,0	2,0	190,0	95	48,0	66,0
76,1	48,3	2,0	2,0	190,0	95	57,0	71,0
76,1	48,3	2,6	2,6	190,0	95	57,0	71,0
76,1	60,3	2,0	2,0	190,0	95	76,0	76,0
88,9	33,7	2,0	2,0	230,0	115	38,0	66,0
88,9	42,4	2,0	2,0	230,0	115	48,0	71,0
88,9	48,3	2,0	2,0	230,0	115	57,0	77,0
88,9	60,3	2,0	2,0	230,0	115	76,0	90,0
88,9	76,1	2,0	2,0	230,0	115	95,0	101,0
88,9	76,1	2,6	2,6	230,0	115	95,0	101,0
114,3	60,3	2,0	2,0	304,0	152	76,0	103,0
114,3	76,1	2,0	2,0	304,0	152	95,0	114,0
114,3	76,1	2,6	2,6	304,0	152	95,0	114,0
114,3	88,9	2,0	2,0	304,0	152	114,0	127,0
114,3	88,9	2,6	2,6	304,0	152	114,0	127,0
139,7	60,3	2,0	2,0	382,0	191	76,0	116,0
139,7	76,1	2,0	2,0	382,0	191	95,0	127,0
139,7	76,1	2,6	2,6	382,0	191	95,0	127,0
139,7	88,9	2,0	2,0	382,0	191	115,0	140,0
139,7	88,9	2,6	2,6	382,0	191	115,0	140,0
139,7	114,3	2,0	2,0	382,0	191	153,0	166,0
139,7	114,3	2,6	2,6	382,0	191	153,0	166,0
139,7	114,3	3,0	3,0	382,0	191	153,0	166,0
168,3	60,3	2,6	2,0	458,0	228	76,0	130,0
168,3	76,1	2,6	2,6	458,0	228	95,0	141,0
168,3	88,9	2,0	2,0	458,0	228	115,0	155,0
168,3	88,9	3,0	3,0	458,0	228	115,0	155,0

D	D2	s	s2	L	l	r	h
168,3	114,3	2,0	2,0	458,0	228	153,0	180,0
168,3	114,3	2,0	2,0	458,0	229	153,0	180,0
168,3	114,3	2,6	2,6	458,0	228	153,0	180,0
168,3	114,3	3,0	3,0	458,0	228	153,0	180,0
168,3	139,7	2,0	2,0	458,0	228	191,0	205,0
168,3	139,7	2,6	2,6	458,0	228	191,0	205,0
168,3	139,7	3,0	3,0	458,0	228	191,0	205,0
219,1	76,1	3,0	3,0	610,0	305	95,0	166,0
219,1	88,9	3,0	3,0	610,0	305	114,5	179,0
219,1	114,3	2,0	2,0	610,0	305	114,5	205,0
219,1	114,3	2,6	2,6	610,0	305	153,0	205,0
219,1	114,3	3,0	3,0	610,0	305	153,0	205,0
219,1	139,7	2,0	2,0	610,0	305	191,0	231,0
219,1	139,7	2,0	2,0	610,0	610	191,0	231,0
219,1	139,7	3,0	3,0	610,0	305	191,0	231,0
219,1	168,3	2,0	2,0	610,0	305	228,0	253,0
219,1	168,3	2,6	2,6	610,0	305	228,0	253,0
219,1	168,3	3,0	3,0	610,0	305	228,0	253,0
273,0	114,3	3,0	2,9	762,0	381	153,0	232,0
273,0	139,7	3,0	2,0	762,0	381	191,0	258,0
273,0	168,0	3,0	3,0	762,0	381	228,0	280,0
273,0	168,3	3,0	3,0	762,0	381	228,0	280,0
273,0	219,1	3,0	3,0	762,0	381	305,0	332,0
323,9	139,7	3,0	3,0	914,0	457	191,0	283,0
323,9	168,3	3,0	3,0	914,0	457	228,0	306,0
323,9	219,1	3,0	3,0	914,0	457	305,0	358,0
323,9	273,0	3,0	3,0	914,0	457	381,0	407,0
323,9	273,0	4,0	4,0	914,0	457	381,0	407,0
355,6	219,1	3,0	3,0	1068,0	534	305,0	373,0
355,6	273,0	3,0	3,0	1068,0	534	381,0	422,0
355,6	323,9	3,0	3,0	1068,0	534	457,0	473,0
406,4	219,1	3,0	3,0	1220,0	534	305,0	399,0
406,4	273,0	3,0	3,0	1220,0	610	381,0	448,0
406,4	323,9	3,0	3,0	1220,0	610	457,0	498,0
406,4	355,6	3,0	3,0	1220,0	610	534,0	560,0

available material: 1.4307, 1.4571

Butt welding fittings > T- and Y-bends > T-bends reduced



T-bend

reduced outlet bend

Version

manufactured/ welded of one pipe elbow 90° type 3 ($r=1,5xD$)

welded under inert gas

pickled in dipping bath

material: 1.4307/304L - 1.4571 - 1.4404/316L

certificate primary material acc. to EN 10204/3.1

from in-house production

