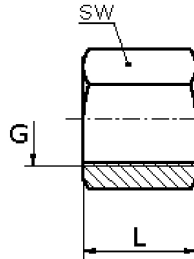
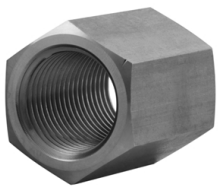


hexagon socket

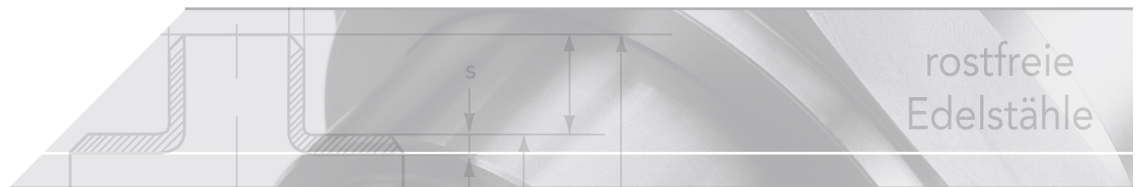
[short name: MU6K*](#)


technical product sheet

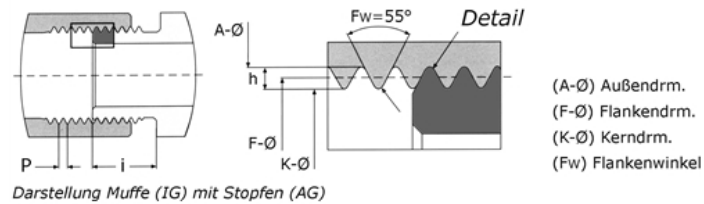
G	L	SW	kg	Art.-Nr.
1/8"	18	14	0,013	MU6K-018-4
1/4"	25	19	0,036	MU6K-014-4
3/8"	26	22	0,044	MU6K-038-4
1/2"	34	27	0,083	MU6K-012-4
3/4"	36	32	0,104	MU6K-034-4
1"	43	41	0,217	MU6K-100-4
1 1/4"	48	50	0,314	MU6K-114-4
1 1/2"	49	55	0,346	MU6K-112-4
2"	56	65	0,424	MU6K-200-4

available material: 1.4571

Threaded fittings > fittings > PN 10 (ECO-Line) > sockets > special versions > hexagon



Whitworth-Rohrgewinde nach DIN / ISO 228



Hexagon socket made of stainless steel

Thread:

Whitworth-Pipe thread according to DIN / ISO 228-G

Type of thread:

Inner- and outer cylindrical thread

Application:

for not in thread sealing connections

This thread is mainly used for the mechanical connection of fittings and valves.

The connection is sealed by pressing two sealing surfaces against each other outside of the thread and by inserting a suitable seal between them.

T	Number of thread	h	P	i
1/8"	28	0,581	0,907	8
1/4"	19	0,856	1,337	12
3/8"	19	0,856	1,337	12
1/2"	14	1,162	1,814	14
3/4"	14	1,162	1,814	16
1"	11	1,479	2,309	18
1 1/4"	11	1,479	2,309	20
1 1/2"	11	1,479	2,309	22
2"	11	1,479	2,309	24
2 1/2"	11	1,479	2,309	
3"	11	1,479	2,309	
4"	11	1,479	2,309	
5"	11	1,479	2,309	
6"	11	1,479	2,309	

T	Flanks-Ø	max. O-Ø for OT	min. Core-Ø for IT
1/8"	9,147	9,728	8,566
1/4"	12,301	13,157	11,445
3/8"	15,806	16,662	14,950
1/2"	19,793	20,955	18,631
3/4"	25,279	26,441	24,117
1"	31,770	33,249	30,291
1 1/4"	40,431	41,910	38,952
1 1/2"	46,324	47,803	44,845
2"	58,135	59,614	56,656
2 1/2"	73,705	75,184	72,226
3"	86,405	87,884	84,926
4"	111,551	113,030	110,072
5"	136,951	138,430	135,472
6"	162,830	163,830	160,872