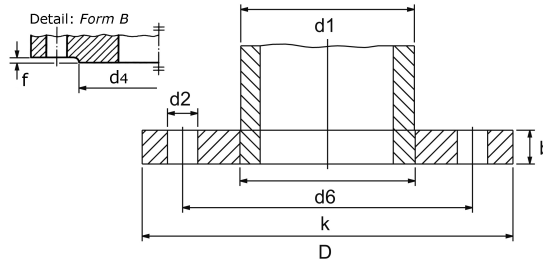


plate flange PN 10  
with raised face

[short name: GF.B10\\*](#)

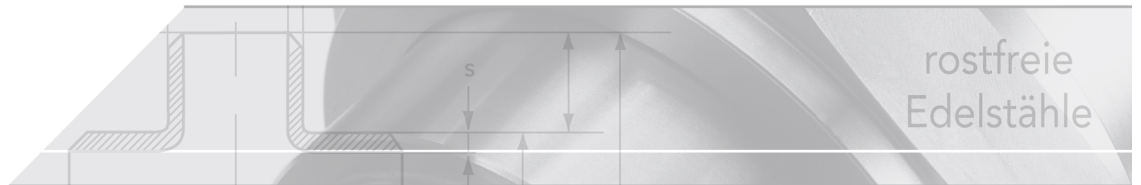


technical product sheet

DN	d1	Typ	D	k	d2	M	d6	b	d4	f
10	17,2	DIN 2576/C	90	60	14	4 x M12	17,7	14	40	2
15	21,3	DIN 2576/C	95	65	14	4 x M12	22,0	14	45	2
20	26,9	DIN 2576/C	105	75	14	4 x M12	27,6	16	58	2
25	33,7	DIN 2576/C	115	85	14	4 x M12	34,4	16	68	2
32	42,4	DIN 2576/C	140	100	18	4 x M16	43,1	16	78	2
40	48,3	DIN 2576/C	150	110	18	4 x M16	49,0	16	88	3
50	60,3	DIN/ EN	165	125	18	4 x M16	61,1	18	102	3
65	76,1	DIN 2576/C	185	145	18	4 x M16	77,1	18	122	3
80	88,9	DIN/ EN (PN16)	200	160	18	8 x M16	90,3	20	138	3
100	114,3	DIN 2576/C	220	20	18	8 x M16	115,9	20	158	3
125	139,7	DIN/ EN (PN16)	250	210	18	8 x M16	141,6	22	188	3
150	168,3	DIN 2576/C	285	240	22	8 x M20	170,5	22	212	3
200	204,0	ähn1. DIN/EN	340	295	22	8 x M20	206,4	24	268	3
200	219,1	DIN/ EN	340	295	22	8 x M20	221,5	24	268	3
250	273,0	DIN/ EN	395	350	22	12x M20	276,5	26	320	3
300	323,9	DIN/ EN	445	400	22	12x M20	327,5	26	370	4
350	355,6	EN 1092-1	505	460	22	16x M20	359,5	30	465	4
400	406,4	DIN/ EN	565	515	26	16x M24	411,0	32	482	4
450	457,2	DIN 2576/C	615	565	26	20x M24	162,0	36	560	4
500	508,0	DIN/ EN	670	620	26	20x M24	513,5	38	615	4
600	610,0	EN 1092-1	780	725	30	20x M27	616,5	42	735	5
800	813,0	ähn1. EN 1092-1	1015	950	33	24x M30		56	905	5
900	914,0	EN 1092-1	1115	1050	33	28x M30		62	1005	5
900	914,0	ähn1. EN 1092-1	1115	1050	33	28x M30		62	1005	5

available material: ask

Flanges > plate flanges > DIN / EN > more sealing surfaces > with raised face > PN 10



## Plate flange for welding - PN 10

Comparison DIN and EN:

DIN (old)	EN (new)
DIN 2576	EN 1092-1 type 01

In contrast to the DIN standard, EN-1092-1 only specifies the pipe connection dimensions of the ISO series. It is therefore sufficient to stamp the nominal diameter (DN) for marking purposes.

Dimension range

DIN 2576	EN 1092-1
DN 10 to 500	DN 200 to 1200 (Dimensions for DN < 200 see PN 16)

## Seal surface with sealing face

Nominal size	Sealing face height [f]
DN < 40	2,0 mm
DN 50 - 250	3,0 mm
DN 300 - 500	4,0 mm
DN 500 - 2000	5,0 mm

## Comparison of dimensions DIN 2576 and EN 1092-1

The following dimensions are identical:

- Outer diameter, [D]
- Circular hole pattern, [k]
- Number of drill holes, [Anz]
- Hole diameter, [d2]

### Deviation for at a glance:

Dimension [b], Thickness of sheet

DN	DIN	EN
32	16	18 (PN 40)
48	16	18 (PN 40)
50	18	20 (PN 16)
65	18	20 (PN 16)
100	20	22 (PN 16)
150	22	24 (PN 16)
350	28	30
450	38	36
600	44	42
700	48	50

All Dimensions in mm

Maß [d6], Inner diameter

DN	DIN	EN
10	17,7	18,0
20	27,6	27,5
25	34,4	34,5
32	43,1	43,5
40	49,0	49,5
50	61,1	61,5
65	77,1	77,5
80	90,3	90,5
100	115,9	116,0
125	141,6	141,5
200	221,8	221,5
250	276,2	276,5
300	327,6	327,5
350	359,7	359,5
450	462,3	462,0
500	513,6	513,5

All dimensions in mm

Number of screw holes

DN	DIN	EN
65	6	8

## Flange connection according to DIN 601

(fits for a pair of flanges)

Consisting of hexagon head screws (number of corresponding flange drill holes)  
4-6 Mu DIN 601 and a gasket EN 1514 DIN 2690 (for example Klingersil C-4400).

DN	DIN	EN
10	4	M 12 x 45
15	4	M 12 x 45
20	4	M 12 x 50
25	4	M 12 x 50
32	4	M 16 x 50
40	4	M 16 x 50
50	4	M 16 x 55
65	8	M 16 x 55
80	8	M 16 x 60
100	8	M 16 x 55
125	8	M 16 x 60
150	8	M 20 x 70
200	12	M 20 x 70
250	12	M 20 x 75
300	12	M 20 x 75
350	16	M 20 x 80
400	16	M 24 x 80
450	20	M 24 x 80
500	20	M 24 x 90
600	20	M 27 x 90