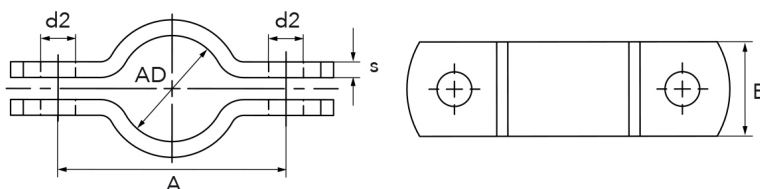


pipe clamp, medium-heavy  
similar to DIN 3567, shape A

[short name: SCM\\*](#)



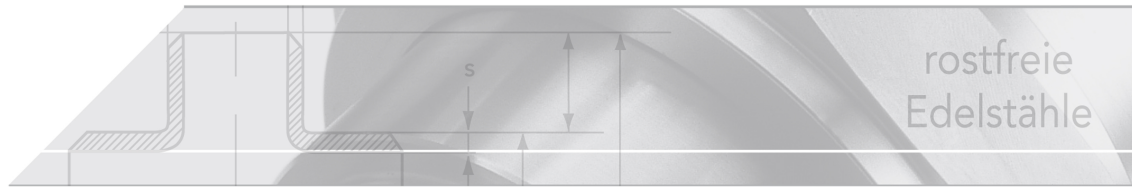
### technical product sheet

DN	Rohr-AD	B	s	A	d2	SB	kg	Art.-Nr.
15	18-19	30	3	50	9,0	M8x25	0,080	SC-018-00M
15	21,3	30	3	50	11,5	M10x30	0,100	SC-021-00M
20	25,0	30	3	62	11,5	M10x30	0,128	SC-025-00M
20	26,9	30	3	66	11,5	M10x30	0,128	SC-026-00M
25	28-29	30	3	68	11,5	M10x30	0,140	SC-029-00M
25	33,7	30	3	72	11,5	M10x30	0,140	SC-033-00M
32	35-36	30	3	76	11,5	M10x30	0,155	SC-036-00M
32	38,0	30	3	82	11,5	M10x30	0,141	SC-038-00M
32	42,4	30	3	82	11,5	M10x30	0,155	SC-042-00M
40	43-45	30	3	84	11,5	M10x30	0,162	SC-044-00M
40	48,3	30	3	88	11,5	M10x30	0,190	SC-048-00M
50	53-57	40	4	104	14,0	M12x35	0,340	SC-054-00M
50	60,3	40	4	108	14,0	M12x35	0,400	SC-060-00M
65	68-70	40	4	122	14,0	M12x35	0,420	SC-070-00M
65	76,1	40	4	122	14,0	M12x35	0,402	SC-076-00M
80	83-85	40	4	136	14,0	M12x35	0,440	SC-084-00M
80	88,9	40	4	136	14,0	M12x35	0,460	SC-088-00M
100	103-108	50	5	172	18,0	M16x45	0,880	SC-104-00M
100	114,3	50	5	178	18,0	M16x45	0,966	SC-114-00M
125	128-133	50	5	196	18,0	M16x45	1,040	SC-129-00M
125	139,7	50	5	204	18,0	M16x45	1,118	SC-139-00M
150	153-155	50	6	222	18,0	M16x45	1,440	SC-154-00M
150	159,0	50	6	222	18,0	M16x45	1,437	SC-159-00M
150	168,3	50	6	232	18,0	M16x45	1,520	SC-168-00M
200	204-206	50	6	280	18,0	M16x45	1,840	SC-204-00M
200	219,1	50	6	284	18,0	M16x45	1,900	SC-219-00M
250	254-256	60	6	342	23,0	M20x50	2,660	SC-254-00M
250	273,0	60	6	348	23,0	M20x50	2,840	SC-273-00M
300	304-308	60	6	392	23,0	M20x50	3,060	SC-304-00M
300	323,9	60	6	398	23,0	M20x50	3,240	SC-323-00M
350	354-358	60	6	444	23,0	M20x50	3,500	SC-355-00M
400	404-410	70	8	498	27,0	M24x60	7,200	SC-406-00M
450	454-460	70	8	548	27,0	M24x60	8,660	SC-457-00M
500	506-512	70	8	614	27,0	M24x60	7,320	SC-508-00M
600	606-612	70	8	710	27,0	M24x60	11,210	SC-609-00M
700	706-712	70	8	812	27,0	M24x60	13,600	SC-711-00M

DN	Rohr-AD	B	s	A	d2	SB	kg	Art.-Nr.
800	806-813	70	8	913	27,0	M24x60	12,600	SC-812-00M
900	908-916	90	10	1030	27,0	M30x70	15,100	SC-914-00M

available material: 1.4301, V4A

Installation supplies > pipe clamps > medium-heavy (acc. DIN)



**2-piece pipe clamps shape A**  
with rounded ends

Design	Designation
heavy	DIN 3567
medium-heavy	DIN 3567, reduced thickness
light	produced from sheet similar to DIN 3567

*PLEASE NOTE*  
*scope of delivery without screws and nuts*

