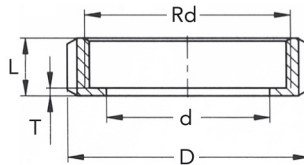


nut DIN 11851, no. 210

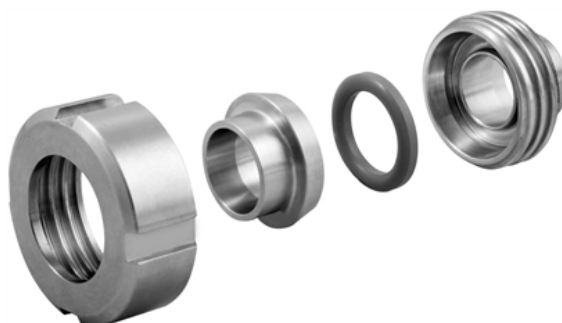
[short name: 210*](#)


technical product sheet

DN	Typ	D	d	Rd	T	L	Art.-Nr.
10	DIN/ISO	38	19	28x1/8"	3	18	GL-210-010
15	DIN/ISO	44	25	34x1/8"	3	18	GL-210-015
20	DIN/ISO	54	31	44x1/6"	3	21	GL-210-020
25	DIN/ISO	63	36	52x1/6"	3	21	GL-210-025
32	ISO	70	44	58x1/6"	3	21	GL-210-I32
32	DIN/ISO	70	42	58x1/6"	3	21	GL-210-032
40	DIN/ISO	78	49	65x1/6"	3	21	GL-210-040
50	DIN/ISO	92	62	78x1/6"	3	22	GL-210-050
65	DIN/ISO	112	80	95x1/6"	4	25	GL-210-065
80	DIN/ISO	127	94	110x1/4"	4	30	GL-210-080
100	DIN/ISO	148	115	130x1/4"	5	31	GL-210-100
125	DIN/ISO	178	138	160x1/4"	5	35	GL-210-125
150	DIN/ISO	210	164	190x1/4"	6	40	GL-210-150

available material: 316L, V2A

Beverage fittings > unions > nuts



Nut F DIN 11851

for the food industry

Materials

V2A

AISI 304/ 304L - 1.4301/ 1.4306, 1.4307

V4A

AISI 316L - 1.4404

