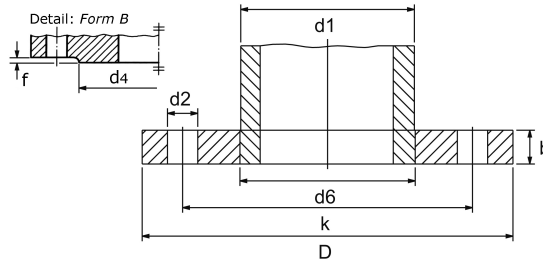


plate flange PN 16  
with raised face

[short name: GF.B16\\*](#)

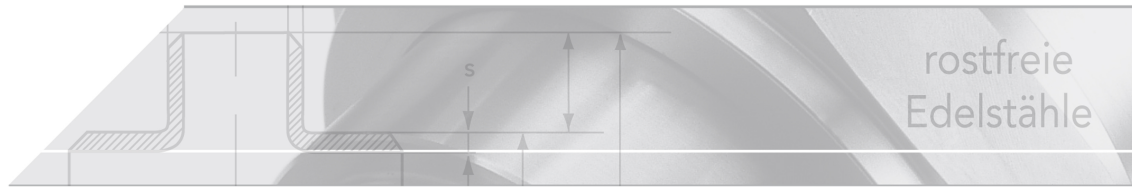


technical product sheet

DN	d1	Typ	D	k	d2	M	d6	b	d4	f
50	60,3	EN 1092-1	165	125	18	4 x M16	61,5	20	102	3
65	76,1	EN 1092-1	185	145	18	8 x M16	77,5	20	122	3
80	88,9	EN 1092-1	200	160	18	8 x M16	90,5	20	138	3
100	104,0	ähn1. EN 1092-1	220	180	18	8 x M16	105,5	22	158	3
100	108,0	ähn1. EN 1092-1	220	180	18	8 x M16	109,5	22	162	3
100	114,3	EN 1092-1	220	180	18	8 x M16	116,0	22	158	3
100	114,3	EN 1092-1	220	180	18	8 x M16	116,0	22	162	3
125	129,0	ähn1. EN 1092-1	250	210	18	8 x M16	130,8	22	188	3
125	133,0	ähn1. EN 1092-1	250	210	18	8 x M16	135,0	22	188	3
125	139,7	EN 1092-1	250	210	18	8 x M16	141,5	22	188	3
150	159,0	ähn1. EN 1092-1	285	240	22	8 x M20	161,0	24	212	3
150	168,3	EN 1092-1	285	240	22	8 x M20	170,5	24	212	3
200	204,0	ähn1. EN 1092-1	340	295	22	12x M20	206,5	26	268	3
200	219,0	EN 1092-1	340	295	22	12x M20	221,5	26	268	3
200	219,1	EN 1092-1	340	295	22	12x M20	221,5	26	268	3
250	273,0	EN 1092-1	405	355	26	12x M24	276,5	29	345	3
300	306,0	ähn1. EN 1092-1	460	410	26	12x M24	309,5	32	378	4
300	323,9	EN 1092-1	460	410	26	12x M24	327,5	32	378	4
350	355,6	EN 1092-1	520	470	26	16x M24	359,0	35	438	4
400	406,4	EN 1092-1	580	525	30	16x M27	411,0	38	565	4
450	457,2	EN 1092-1	640	585	30	20x M27	462,0	42	550	4

available material: 1.4301

Flanges > plate flanges > DIN / EN > more sealing surfaces > with raised face > PN 16



## Plate flange PN 16 according to EN 1092-1 type 01

Comparison DIN und EN:

DIN (old)	EN (new)
DIN 2576 PN 10	EN 1092-1 type 01 (PN 16)

Dimension range

DIN 2576	EN 1092-1
DN 10 to 500	DN 50 to 1000
	(Dimensions DN < 50 see PN 40)

## Seal surface with sealing face

Machining the seal surface shape

DIN 2526	EN 1092-1
Shape C	Shape B1

Sealing face height

Nominal diameter	Sealing face height [f]
DN < 40	2,0 mm
DN 50 - 250	3,0 mm
DN 300 - 500	4,0 mm
DN 500 - 2000	5,0 mm

Surface

Machining	Ra (µm)	Rz (µm)
rotated	min. 3,25 / max. 12,5	min. 12,5/ max. 50

## Comparison of dimensions DIN 2576 PN 10 and EN 1092-1 PN 16

The following dimensions are identical:

- Outer diameter, [D]
- Inner diameter, [d6]
- Hole diameter, [d2]

### Deviation at a glance:

Number of screw holes [Anz]

DN	DIN (PN 10)	EN (PN 16)
65	4	8
200	8	12

Dimension [k], circular hole pattern

DN	DIN	EN
250	350	355
300	400	410
350	460	470
400	515	525
500	620	650
600	725	770

All dimension in mm

Dimension [b], Thickness of sheet

DN	DIN	EN
50	18	20

## Flange connection according to DIN 601

(fits to a pair of flanges)

Consisting of hexagon head screws (number of corresponding flange drill holes)  
4-6 Mu DIN 601 and a gasket EN 1514 DIN 2690 (for example Klingersil C-4400).

DN	Number	Size
10	4	M 12 x 45
15	4	M 12 x 45
20	4	M 12 x 50
25	4	M 12 x 50
32	4	M 16 x 50
40	4	M 16 x 50
50	4	M 16 x 55
65	8	M 16 x 55
80	8	M 16 x 60
100	8	M 16 x 55
125	8	M 16 x 60
150	8	M 20 x 70
200	12	M 20 x 70
250	12	M 24 x 75
300	12	M 24 x 80
350	16	M 24 x 90
400	16	M 27 x 100
500	20	M 30 x 110
600	20	M 33 x 110