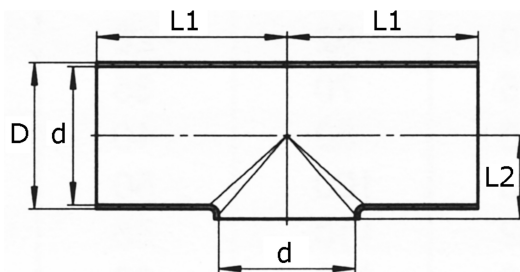
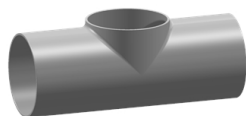


T-piece short, no. 5111

[short name: 5111*](#)


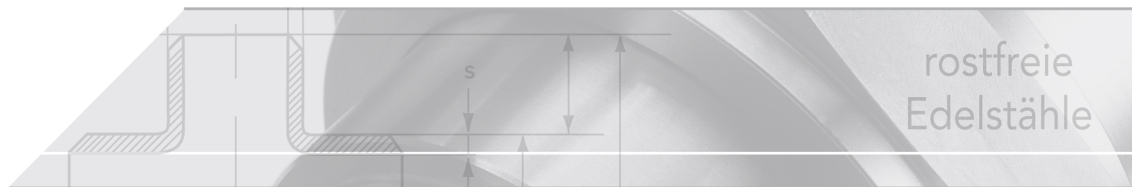
technical product sheet

| O | DN | Reihe | D | s | d | L | L1 | L2 | kg | Art.-Nr. |
|---------|-----|---------|-------|-----|-----|-----|-----|-------|-------|------------|
| matt | 10 | Reihe 1 | 12,0 | 1,5 | 9 | 52 | 35 | 8,0 | 0,020 | TR-010-R0K |
| matt | 10 | Reihe 2 | 13,0 | 1,5 | 10 | 52 | 35 | 8,5 | 0,031 | TR-010-00K |
| matt | 15 | Reihe 1 | 18,0 | 1,5 | 15 | 70 | 35 | 11,0 | 0,050 | TR-015-R0K |
| matt | 15 | Reihe 2 | 19,0 | 1,5 | 16 | 70 | 35 | 11,0 | 0,044 | TR-015-00K |
| matt | 20 | Reihe 1 | 22,0 | 1,5 | 19 | 80 | 40 | 13,0 | 0,060 | TR-020-R0K |
| matt | 20 | Reihe 2 | 23,0 | 1,5 | 20 | 80 | 40 | 13,0 | 0,060 | TR-020-00K |
| matt | 25 | Reihe 1 | 28,0 | 1,5 | 25 | 100 | 50 | 16,0 | 0,100 | TR-025-R0K |
| matt | 25 | Reihe 2 | 29,0 | 1,5 | 26 | 100 | 50 | 16,0 | 0,141 | TR-025-00K |
| matt | 32 | Reihe 1 | 34,0 | 1,5 | 31 | 110 | 55 | 19,5 | 0,120 | TR-032-R0K |
| matt | 32 | Reihe 2 | 35,0 | 1,5 | 32 | 110 | 55 | 19,5 | 0,150 | TR-032-00K |
| matt | 40 | Reihe 1 | 40,0 | 1,5 | 37 | 120 | 60 | 23,0 | 0,180 | TR-040-R0K |
| matt | 40 | Reihe 2 | 41,0 | 1,5 | 38 | 120 | 60 | 23,0 | 0,170 | TR-040-00K |
| matt | 50 | Reihe 1 | 52,0 | 1,5 | 49 | 140 | 70 | 30,0 | 0,250 | TR-050-R0K |
| matt | 50 | Reihe 2 | 53,0 | 1,5 | 50 | 140 | 70 | 30,0 | 0,260 | TR-050-00K |
| matt | 65 | Reihe 2 | 70,0 | 2,0 | 66 | 160 | 80 | 40,0 | 0,540 | TR-065-00K |
| matt | 80 | Reihe 2 | 85,0 | 2,0 | 81 | 180 | 90 | 47,5 | 0,740 | TR-080-00K |
| matt | 100 | Reihe 2 | 104,0 | 2,0 | 100 | 200 | 100 | 58,0 | 0,960 | TR-100-00K |
| matt | 125 | Reihe 2 | 129,0 | 2,0 | 125 | 375 | 188 | 74,0 | 1,970 | TR-125-00K |
| matt | 150 | Reihe 2 | 154,0 | 2,0 | 150 | 450 | 225 | 90,0 | 3,160 | TR-150-00K |
| matt | 200 | Reihe 2 | 204,0 | 2,0 | 200 | 600 | 300 | 115,0 | 3,250 | TR-200-00K |
| poliert | 10 | Reihe 1 | 12,0 | 1,5 | 9 | 70 | 35 | | 0,000 | GL-511-R10 |
| poliert | 10 | Reihe 1 | 12,0 | 1,5 | 9 | 70 | 35 | 8,0 | 0,000 | GL-511-R10 |
| poliert | 10 | Reihe 2 | 13,0 | 1,5 | 10 | 70 | 35 | 11,0 | 0,000 | GL-511-010 |
| poliert | 15 | Reihe 1 | 18,0 | 1,5 | 15 | 70 | 35 | 11,0 | 0,000 | GL-511-R15 |
| poliert | 15 | Reihe 2 | 19,0 | 1,5 | 16 | 70 | 35 | 11,0 | 0,000 | GL-511-015 |
| poliert | 20 | Reihe 1 | 22,0 | 1,5 | 19 | 80 | 40 | 13,0 | 0,060 | GL-511-R20 |
| poliert | 20 | Reihe 2 | 23,0 | 1,5 | 20 | 80 | 40 | 13,0 | 0,064 | GL-511-020 |
| poliert | 25 | Reihe 1 | 28,0 | 1,5 | 25 | 100 | 50 | 16,0 | 0,100 | GL-511-R25 |
| poliert | 25 | Reihe 2 | 29,0 | 1,5 | 26 | 100 | 50 | 16,0 | 0,089 | GL-511-025 |
| poliert | 32 | Reihe 1 | 34,0 | 1,5 | 31 | 110 | 55 | 19,5 | 0,130 | GL-511-R32 |
| poliert | 32 | Reihe 2 | 35,0 | 1,5 | 32 | 110 | 55 | 19,5 | 0,120 | GL-511-032 |
| poliert | 40 | Reihe 1 | 40,0 | 1,5 | 37 | 120 | 60 | 23,0 | 0,160 | GL-511-R40 |
| poliert | 40 | Reihe 2 | 41,0 | 1,5 | 38 | 120 | 60 | 23,0 | 0,174 | GL-511-040 |
| poliert | 50 | Reihe 1 | 52,0 | 1,5 | 49 | 140 | 70 | 30,0 | 0,250 | GL-511-R50 |
| poliert | 50 | Reihe 2 | 53,0 | 1,5 | 50 | 140 | 70 | 30,0 | 0,245 | GL-511-050 |
| poliert | 65 | Reihe 2 | 70,0 | 2,0 | 66 | 160 | 80 | 40,0 | 0,486 | GL-511-065 |
| poliert | 80 | Reihe 2 | 85,0 | 2,0 | 81 | 180 | 90 | 47,5 | 0,729 | GL-511-080 |

| O | DN | Reihe | D | s | d | L | L1 | L2 | kg | Art.-Nr. |
|---------|-----|---------|-------|-----|-----|-----|-----|-------|-------|------------|
| poliert | 100 | Reihe 2 | 104,0 | 2,0 | 100 | 200 | 100 | 58,0 | 0,918 | GL-511-100 |
| poliert | 125 | Reihe 2 | 129,0 | 2,0 | 125 | 375 | 188 | 74,0 | 2,132 | GL-511-125 |
| poliert | 150 | Reihe 2 | 154,0 | 2,0 | 150 | 450 | 225 | 90,0 | 2,048 | GL-511-150 |
| poliert | 200 | Reihe 2 | 204,0 | 2,0 | 200 | 600 | 300 | 115,0 | 0,000 | GL-511-200 |

available material: V2A, V4A

Beverage fittings > fittings > T-pieces > short



T-piece, short

for the food industry

Manufactured of pipe DIN 11850 table 4.

Materials

V2A: 1.4301/ 1.4306, 1.4307 or AISI 304/ 304L

V4A: 1.4404 or AISI 316L

Surface

| Version | Number |
|----------|--------|
| matt | 5111 |
| polished | 5111p |

Permissible pressure acc. to. DIN 11852

| Nominal diameter | Pressure level |
|------------------|----------------|
| DN 10 - 50 | 25 bar |
| DN 65 - 80 | 16 bar |
| DN 100 | 12,5 bar |
| DN 125 | 10 bar |
| DN 150 | 8 bar |
| DN 200 | 5 bar |

