

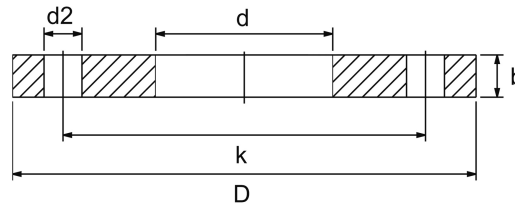
blind flange

[short name: BFDB*](#)

similar to DIN 2527/B

with central through hole

bzw. EN 1092-1/A Typ 05



technical product sheet

PN	DN	d	D	k	b	d2	Anz
10	200	30,0	340	295	24	22	8
10	200	62,0	340	295	24	22	8
10	200	145,0	340	295	24	22	8
16	15	22,0	95	65	14	14	4
16	15	25,0	95	65	14	14	4
16	20	15,0	105	75	16	14	4
16	20	38,1	105	75	16	14	4
16	25	12,2	115	85	16	14	4
16	25	15,2	115	85	16	14	4
16	25	30,0	115	85	16	14	4
16	25	33,0	115	85	16	14	4
16	32	15,0	140	100	16	18	4
16	32	32,0	140	100	16	18	4
16	32	34,0	140	100	16	18	4
16	40	22,2	150	110	16	18	4
16	40	35,0	150	110	16	18	4
16	40	39,0	150	110	16	18	4
16	40	49,0	150	110	16	18	4
16	40	50,8	150	110	16	18	4
16	40	63,5	150	110	16	18	4
16	50	12,2	165	125	18	18	4
16	50	15,0	165	125	18	18	4
16	50	25,4	165	125	18	18	4
16	50	28,0	165	125	18	18	4
16	50	36,0	165	125	18	18	4
16	50	38,1	165	125	18	18	4
16	50	41,0	165	125	18	18	4
16	50	50,0	165	125	18	18	4
16	50	50,8	165	125	18	18	4
16	50	56,0	165	125	18	18	4
16	50	68,0	165	125	18	18	4
16	50	76,2	165	125	18	18	4
16	65	43,0	185	145	18	18	4
16	65	63,5	185	145	18	18	4
16	65	65,0	185	145	18	18	4
16	65	77,0	185	145	18	18	4

PN	DN	d	D	k	b	d2	Anz
16	80	35,0	200	160	20	18	8
16	80	43,0	200	160	20	18	8
16	80	50,8	200	160	20	18	8
16	80	61,1	200	160	20	18	8
16	80	63,5	200	160	20	18	8
16	80	76,6	200	160	20	18	8
16	80	82,5	200	160	20	18	8
16	80	90,0	200	160	20	18	8
16	80	94,0	200	160	20	18	8
16	100	35,0	220	180	20	18	8
16	100	50,0	220	180	20	18	8
16	100	62,0	220	180	20	18	8
16	100	68,0	220	180	20	18	8
16	100	76,5	220	180	20	18	8
16	100	91,0	220	180	20	18	8
16	125	106,0	250	210	22	18	8
16	125	115,9	250	210	22	18	8
16	150	28,0	285	240	22	22	8
16	150	33,0	285	240	22	22	8
16	150	37,0	285	240	22	22	8
16	150	43,0	285	240	22	22	8
16	150	62,0	285	240	22	22	8
16	150	90,0	285	240	22	22	8
16	150	92,0	285	240	22	22	8
16	150	114,3	285	240	22	22	8
16	200	68,0	340	295	24	22	12
16	200	90,5	340	295	24	22	12
16	200	170,0	340	295	24	22	12
16	250	123,0	405	355	26	26	12
16	300	170,0	460	410	28	26	12
16	300	276,0	460	410	28	26	12
40	20	12,2	105	75	18	14	4
40	25	12,2	115	85	18	14	4
40	25	14,2	115	85	18	14	4
40	25	15,2	115	85	18	14	4
40	25	21,4	115	85	18	14	4
40	25	60,3	115	85	18	14	4
40	40	18,0	150	110	18	18	4
40	40	32,0	150	110	18	18	4
40	40	35,0	150	110	18	18	4
40	40	43,5	150	110	18	18	4
40	40	49,5	150	110	18	18	4
40	50	12,2	165	125	20	18	4
40	50	15,0	165	125	20	18	4
40	50	22,2	165	125	20	18	4
40	80	94,0	200	160	24	18	8

available material: ask

Flanges > blind flanges > with central hole > with through hole

