

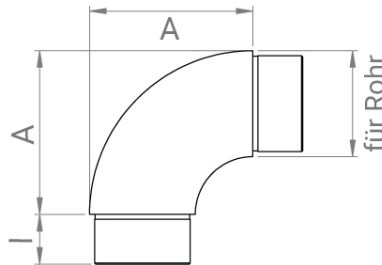
Plug fitting - elbow 90°

[short name: EDEL-BO*](#)

polished surface

geschliffen K240

>hecoNNECT Geländerbausystem<



technical product sheet

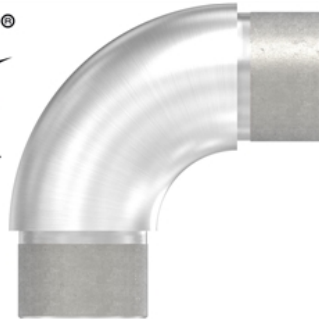
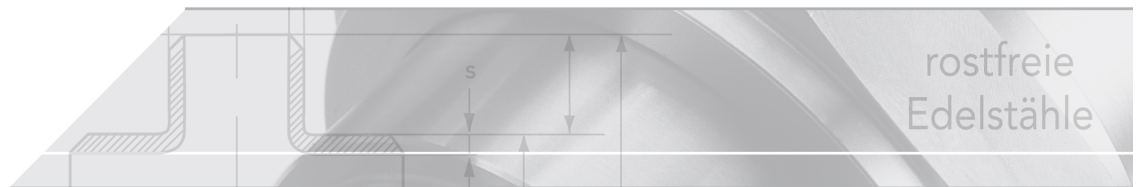
Rohr	A	l	Art.-Nr.
für Rundrohr \varnothing 21,3	45,8	20	EDEL-BO-21X20-V2A
für Rundrohr \varnothing 21,3	45,8	20	EDEL-BO-21X20-V4A
für Rundrohr \varnothing 26,9	48,6	20	EDEL-BO-26X20-V2A
für Rundrohr \varnothing 26,9	48,6	20	EDEL-BO-26X20-V4A
für Rundrohr \varnothing 33,7	52,0	20	EDEL-BO-33X20-V2A
für Rundrohr \varnothing 33,7	52,0	20	EDEL-BO-33X20-V4A
für Rundrohr \varnothing 33,7	52,0	20	EDEL-BO-33X25-V2A
für Rundrohr \varnothing 40,0	64,0	20	EDEL-BO-40X20-V2A
für Rundrohr \varnothing 42,4	65,5	20	EDEL-BO-42X20-V2A
für Rundrohr \varnothing 42,4	65,5	20	EDEL-BO-42X20-V4A
für Rundrohr \varnothing 42,4	65,5	20	EDEL-BO-42X25-V2A
für Rundrohr \varnothing 42,4	65,5	20	EDEL-BO-42X30-V2A
für Rundrohr \varnothing 48,3	74,5	20	EDEL-BO-48X20-V2A
für Rundrohr \varnothing 60,3	80,0	20	EDEL-BO-60X20-V2A

available material: ask

Systems > railing construction > plug fittings > Bends > elbow 90°

full description:

Plug fitting - elbow 90°
 polished surface
 geschliffen K240
 >hecoNNECT Geländerbausystem<
 >hecoNNECT railing construction system<



Processing

1. Apply adhesive on the part to be glued
2. Turn pipes and fittings in opposite directions and join together
3. Do not handle any more after gluing, allow to harden

The parts can also be fastened with screws or rivets on the underside.

The wall brackets and base plates are fastened using anchors and screws.

You absolutely must make sure that the anchoring requirements are fulfilled!

LOCTITE 638

Viskosity	Strength	Temp.	max. Game
[mPa s]	[N/mm ²]	[°C]	[mm]
1500-300	20 - 35	-50 bis +150	0,25

Fast curing, extra strong for dynamically stressed connections.

Final strength after about 12 hours.

Liability:

Due to the large number of different laws and regulations, it is impossible for us to assume liability for the constructional suitability of our products.

We would therefore like to point out that the ordering party is always responsible for ensuring the legal regulations are followed.

Before use, clean and degrease the parts and roughen the adhesive areas, ideal processing temperature is 15° C or higher, apply adhesive sparingly, and turn both parts in opposite directions.

Do not move for 4 – 5 minutes, hardens after 30 – 60 minutes, final strength after about 12 hours, do not move during this time.

Remove any glue overflow appearing at the glued areas after hardened, max. joint of 0.25 mm. Can be separated by heating to over 800°C (blower).

LOCTITE 638 adhesive is used to join and glue cylindrical parts. The greatest advantage of this adhesive is the simple and rational production of the parts to be joined – due to the relatively large tolerances.

Permits assembly in the slider seat instead of press and shrink seats, which are associated with high costs and have the disadvantage of stress concentrations and warping.

Can be stored for 12 months at max. 20°C.