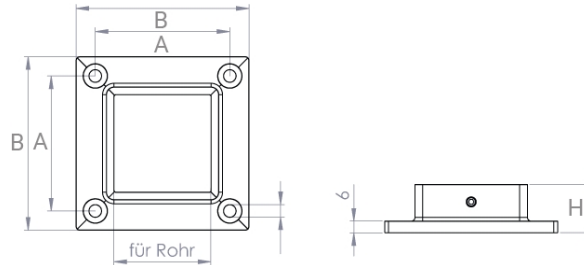


Anchor flange, unpolished

short name: [WBQ2\\*](#)

>hecoNNECT railing-  
construction system<  
geschliffen K240



### technical product sheet

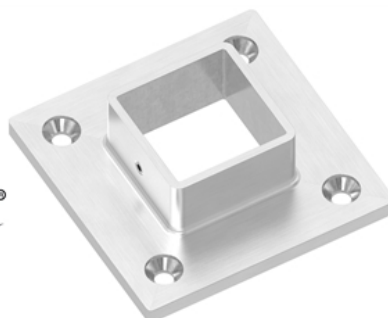
Rohr	B	A	d2	H	Art.-Nr.
30 x 30	70	50	6,5	25	EDEL-WB30X30-V2A-Q2
30 x 30	70	50	6,5	25	EDEL-WB30X30-V4A-Q2
40 x 40	90	70	6,5	25	EDEL-WB40X40-V2A-Q2
40 x 40	90	70	6,5	25	EDEL-WB40X40-V4A-Q2
50 x 50	90	70	6,5	25	EDEL-WB50X50-V2A-Q2
50 x 50	90	70	6,5	25	EDEL-WB50X50-V4A-Q2

available material: ask

Systems > railing construction > anchors and flanges > Anchor > flange, untreated

full description:

Anchor flange, unpolished  
>hecoNNECT railing-  
construction system<  
geschliffen K240  
>hecoNNECT Geländerbausystem<



### Wand- & Bodenanker

für Quadratrohre

mit 4 Bohrungen  $\varnothing$  6.5 mm, gesenkt für M6

zum Klemmen mittels seitl. Madenschraube

Edelstahl

geschliffen K240

*passende Abdeckkrosette für Abm. 90x40x70 mm: Typ ARQ4*

