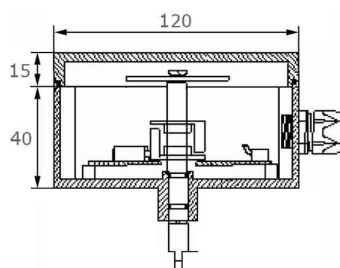


stand. skříňka konc. spínače  
kompakt. skříňka konc. spínače  
> nerezová hřídel

[zkratka označení: PR.\\*](#)



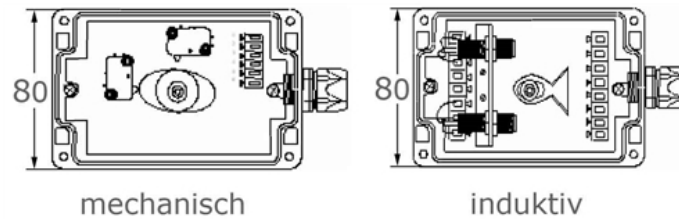
### technický list výrobku

Typ	Ausf	kg	Art.-Nr.
mit Dome	mechanisch	0,000	PRME-STAND-D
mit Dome	induktiv	0,000	PRIS-STAND-D
mit Sichtfenster	mechanisch	0,332	PRME-STAND-S
mit Sichtfenster	induktiv	0,460	PRIS-STAND-S

dostupné jakosti: Polyamid

Armatury > kulové kohouty > s pohonem > pneumatické > příslušenství > hlásič pozice > standard

Úplný popis: stand. skříňka konc. spínače  
kompakt. skříňka konc. spínače  
> nerezová hřídel



### Properties:

Housing: Macrolon (PA)

Shaft: Polyamid

Type of protection (DIN 40 050): IP65

Ambient temperature: -40°C to +80°C

Cable entry: Threaded cable connection M20\*

Cable diameter: 8 - 13 mm\*

Design: acc. to VDE/VDI 3845 or NAMUR

\*) Other parameters available on request

### Available equipment:

- 2 mechanical microswitches
- Inductive sensors with 2-wire or 3-wire connection
- Pneumatic switch
- 2 mechanical microswitches with gold contacts
- Solenoid valve connection (single or double)

Standard limit switch boxes have a F05 flange fitting, as well as a fastening hole diagram for M4 screws. Suitable mounting brackets are available in various designs.

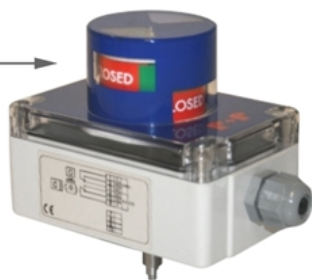
### Compare the protection types according to DIN EN 60529:

IP 65: Housing is dustproof and protected against sprayed water

IP 67: housing is dustproof and protected against strongly sprayed water

IP 68: Housing is dustproof and protected against temporary immersion in water

optional:  
mit Dome



DIN EN 60529				
Schutz gegen...	Strahlwasser	Starkes Strahlwasser	Zeitweise Untertauchen	
	IP 6..	IP 65	IP 66	IP 67
Staubdicht				