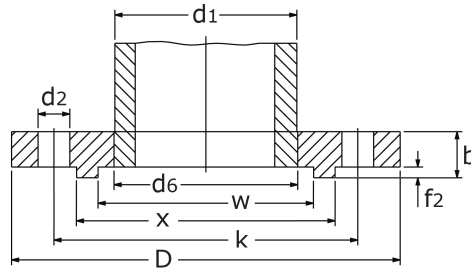


plate flange PN 10 with tongue

[short name: GF.C10\\*](#)

EN 1092-1 type 01/C

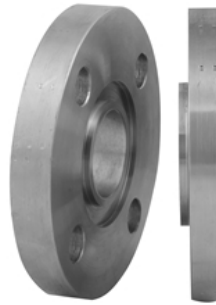
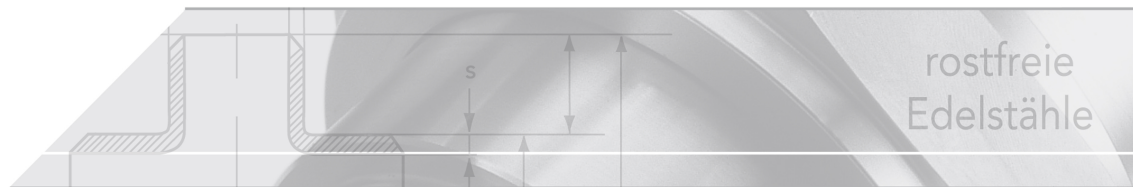


### technical product sheet

DN	d1	D	k	d2	M	d6	b	f2	w	x	kg	Art.-Nr.
200	219,1	340	295	22	8 x M20	221,5	24	5,0	239	259	8,730	GF-219-C10
250	273,0	395	350	22	12x M20	276,5	26	5,0	292	312	12,040	GF-273-C10
300	323,9	445	400	22	12x M20	327,5	26	5,0	343	363	13,870	GF-323-C10
350	355,6	505	460	22	16x M20	359,5	30	5,5	395	421	22,230	GF-355-C10
400	406,4	565	515	26	16x M24	411,0	32	5,5	447	473	0,000	GF-406-C10
450	457,0	615	565	26	20x M24	462,0	36	5,5	497	523	0,000	GF-457-C10
500	508,0	670	620	26	20x M24	513,5	38	5,5	549	575	0,000	GF-508-C10
600	610,0	780	725	30	20x M27	616,5	42	5,5	649	675	0,000	GF-610-C10

available material: ask

Flanges &gt; plate flanges &gt; DIN / EN &gt; more sealing surfaces &gt; groove and tongue &gt; EN 1092-1 &gt; PN 10 &gt; with tongue



### **Plate flange - PN 10 according to EN 1092-1 type 01 with spring**

(Dimensions for DN < 50 see PN 40, Dimensions for DN 50 till < 200 see PN 16)

Spring according to EN-1092-1 Shape C

Tolerance +0,5/0 mm

### **Comparisson of standards**

The overall dimensions of the tongues and grooves according to DIN EN 1092-1 are designed lower or higher than according to DIN 2515.