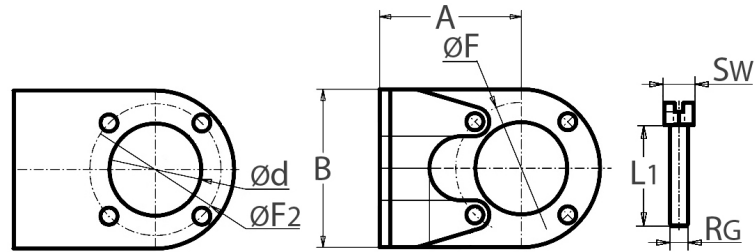


stainless steel mounting set
mounting of limit switch box
on manually operated valve

[short name: AZAS*](#)

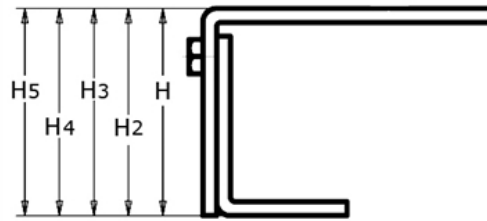
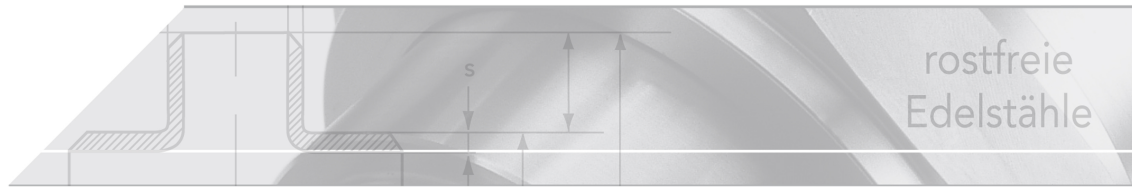


technical product sheet

F	F2	H	A	B	d	L1	SW	RG	kg	Art.-Nr.
F05	F03	60	54	60,0	35,5	25	13	M 4	0,000	AZAS-05X03-M4
F05	F03	60	54	60,0	35,5	25	13	M 5	0,000	AZAS-05X03-M5
F05	F04	60	54	60,0	35,5	25	13	M 5	0,010	AZAS-05X04-M5
F05	F04	60	54	60,0	35,5	50	13	M 6	0,000	AZAS-05X04-M6
F05	F05	60	54	60,0	35,5	25	13	M 5	0,000	AZAS-05X05-M5
F05	F05	60	54	60,0	35,5	50	13	M 6	0,000	AZAS-05X05-M6
F05	F07	60	54	64,5	35,5	25	13	M 5	0,000	AZAS-05X07-M5
F05	F07	60	54	64,5	35,5	45	13	M 8	0,000	AZAS-05X07-M8
F05	F07	60	54	64,5	35,5	50	13	M 6	0,010	AZAS-05X07-M6
F05	F10	80	74	71,9	35,5	45	13	M 8	0,000	AZAS-05X10-M8
F05	F10	80	74	71,9	35,5	60	13	M10	0,456	AZAS-05X10-M10
F05	F10	80	74	71,9	35,5	60	13	M12	0,000	AZAS-05X10-M12
F05	F12	80	74	110,4	35,5	60	13	M 8	0,000	AZAS-05X12-M8
F05	F12	80	74	110,4	35,5	60	13	M10	0,000	AZAS-05X12-M10
F05	F12	80	74	110,4	35,5	60	13	M12	0,000	AZAS-05X12-M12

available material: ask

Industrial valves > ball valves > with actuator > pneumatic > accessories > mounting sets



verschiedene Höhen möglich

Height adjustment options

Heights	up to circular hole pattern F05xF	from circular hole pattern F05xF1
H	60 mm	80 mm
H2	70 mm	90 mm
H3	80 mm	100 mm
H4	90 mm	110 mm
H5	100 mm	120 mm

Comparison of the dimensions of the circular hole patterns

Circular hole pattern	Hole spacing	Ø hole
F 03	25	5,5
F 04	30	5,5
F 05	35	6,5
F 07	55	8,5
F 10	70	10,5
F 12	85	13
F 14	100	17
F 16	130	21
F 25	200	18
F 30	230	21

Specifications in mm

