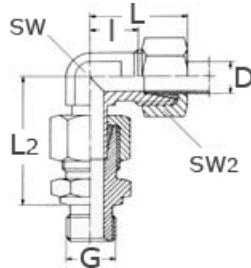


elbow coupling, adjustable  
with male thread  
DIN 2353, EN ISO 8434-1

[short name: EVW.G\\*](#)

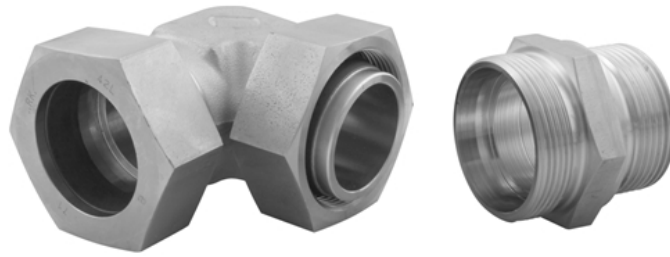


technical product sheet

Reihe	D	G	PN	L	I	L2	SW	SW2	kg	Art.-Nr.
leicht	6	1/8"	315			12,0	12	14	0,056	2353-EVW06LG01
leicht	28	1"	160	47,0	31,0	44,0	36	41	0,476	2353-EVW28LG08
leicht	42	1 1/2"	160	63,0	40,0	75,5	50	60	1,113	2353-EVW42LG12

available material: ask

Systems > cutting rings > elbow couplings > adjustable > with male thread



Adjustable elbow coupling made of stainless steel  
DIN 2353, EN ISO 8341-1

Threaded socket: Whitworth-pipe thread - cylindrical  
Sealed by sealing edge Form B.

### Nominal pressures PN

Series	Pipe OØ	PN
L (light)	6 - 15	250
	18 - 22	160
	28 - 42	100
S (heavy)	6 - 14	630
	16 - 25	400
	30 - 38	250

The nominal pressure is a commonly used rounded-off number referring to the pressure that is listed for static loads with a 3- or 4-fold safety margin.

### Pressure deductions

Temperature	Pressure deduction
+50°C	4,5%
+100°C	11%
+200°C	20%
+300°C	29%
+400°C	33%

*For seal materials such as FPM and Viton, the temperature limits of -25 to +200°C must be noted.*

All values specified are guidelines that can also be influenced to a greater or lesser extent by the medium.