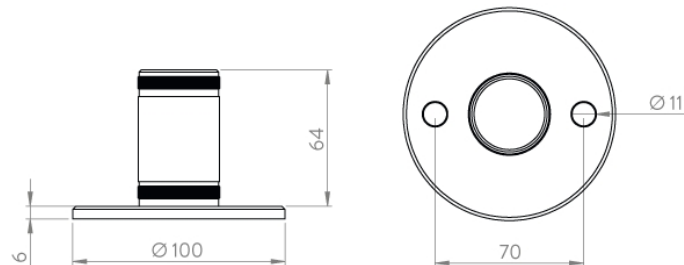
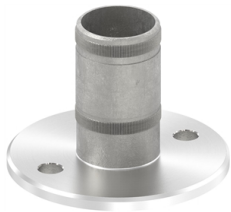


Anchor with knurl for wall and floor
>hecoNNECT railing-construction system<

short name: [WBR2*](#)



technical product sheet

Rohr	D	d2	Art.-Nr.
Ø 33,7 x 2,0	100	11	EDEL-WB33X20-V2A-R2
Ø 42,4 x 2,0	100	11	EDEL-WB42X20-V2A-R2
Ø 42,4 x 2,0	100	11	EDEL-WB42X20-V4A-R2
Ø 42,4 x 2,5	100	11	EDEL-WB42X25-V2A-R2
Ø 48,3 x 2,0	100	11	EDEL-WB48X20-V2A-R2
Ø 48,3 x 2,5	100	11	EDEL-WB48X25-V2A-R2

available material: V2A

Systems > railing construction > anchors and flanges > Anchor > with knurl



Wand- & Bodenanker

Patte 100 x 6 mm

mit 2 Bohrungen Ø11 mm, mit Fase

zum Einschlagen ins Rohr

für Rundrohre

mit Rändelung

aus Edelstahl

geschliffen K240

