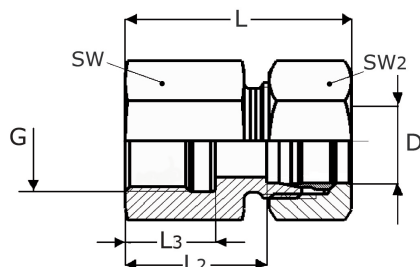
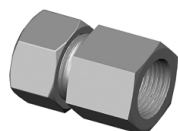


přímé našroubovací šroubení

[zkratka označení: GAI*](#)

DIN 2353, EN ISO 8434-1



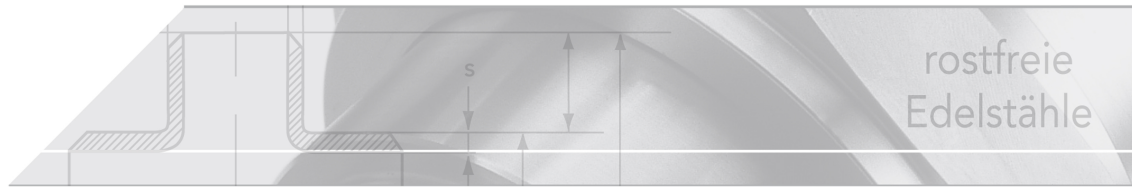
technický list výrobku

Reihe	G	D	PN	L	L2	L3	SW	SW2	Art.-Nr.
leicht	1/8"	6	315	34	19,0	12,0	14	14	2353-GAI06LG01
leicht	1/8"	8	315	35	20,0	12,0	17	17	2353-GAI08LG01
leicht	1/4"	6	315	39	24,0	17,0	19	14	2353-GAI06LG02
leicht	1/4"	8	315	39	24,0	17,0	19	17	2353-GAI08LG02
leicht	1/4"	10	315	40	25,0	17,0	19	19	2353-GAI10LG02
leicht	1/4"	12	315	41	26,0	17,0	19	22	2353-GAI12LG02
leicht	1/4"	15	315	42	26,0	17,0	22	27	2353-GAI15LG02
leicht	3/8"	6	315	41	27,0	17,0	22	14	2353-GAI06LG03
leicht	3/8"	8	315	42	26,5	17,0	24	17	2353-GAI08LG03
leicht	3/8"	10	315	41	26,0	17,0	22	19	2353-GAI10LG03
leicht	3/8"	12	315	41	26,0	17,0	24	22	2353-GAI12LG03
leicht	3/8"	15	315	42	26,0	17,0	24	27	2353-GAI15LG03
leicht	3/8"	18	315	43	26,5	17,0	27	32	2353-GAI18LG03
leicht	1/2"	6	315	45	30,0	20,0	27	14	2353-GAI06LG04
leicht	1/2"	8	315	44	29,0	20,0	27	17	2353-GAI08LG04
leicht	1/2"	10	315	45	31,0	20,0	27	19	2353-GAI10LG04
leicht	1/2"	12	315	45	30,0	20,0	27	22	2353-GAI12LG04
leicht	1/2"	15	315	46	31,0	20,0	27	27	2353-GAI15LG04
leicht	1/2"	18	315	46	30,5	20,0	27	32	2353-GAI18LG04
leicht	1/2"	22	160	52	34,5	22,0	32	36	2353-GAI22LG04
leicht	3/4"	12	315	51	36,0	22,0	36	22	2353-GAI12LG06
leicht	3/4"	18	315	46	31,0	22,0	32	32	2353-GAI18LG06
leicht	3/4"	22	160	52	35,5	22,0	32	36	2353-GAI22LG06
leicht	3/4"	28	160	57	44,0	22,0	36	41	2353-GAI28LG06
leicht	1"	18	315	52	35,0	24,5	41	32	2353-GAI18LG08
leicht	1"	22	160	56	34,5	24,5	41	36	2353-GAI22LG08
leicht	1"	28	160	55	35,5	24,5	41	41	2353-GAI28LG08
leicht	1 1/4"	35	160	63	39,0	26,5	55	50	2353-GAI35LG10
leicht	1 1/2"	42	160	65	42,5	28,5	60	60	2353-GAI42LG12
schwer	1/4"	6	630	41	26,0	17,0	19	17	2353-GAI06SG02
schwer	1/4"	8	630	41	26,0	17,0	19	19	2353-GAI08SG02
schwer	1/4"	12	630	43	26,5	17,0	22	24	2353-GAI12SG02
schwer	1/4"	16	400	45	27,0	17,0	27	30	2353-GAI16SG02
schwer	3/8"	10	630	43	26,5	17,0	22	22	2353-GAI10SG03
schwer	3/8"	12	630	43	26,5	17,0	24	24	2353-GAI12SG03
schwer	3/8"	14	400	46	29,0	17,0	24	27	2353-GAI14SG03

Reihe	G	D	PN	L	L2	L3	SW	SW2	Art.-Nr.
schwer	3/8"	14	400	50	32,0	20,0	27	27	2353-GAI14SG04
schwer	3/8"	16	400	45	26,5	17,0	27	30	2353-GAI16SG03
schwer	1/2"	8	630	46	32,0	20,0	27	19	2353-GAI08SG04
schwer	1/2"	10	630	46	31,0	20,0	27	22	2353-GAI10SG04
schwer	1/2"	12	630	47	30,5	20,0	30	24	2353-GAI12SG04
schwer	1/2"	16	400	50	31,5	20,0	30	30	2353-GAI16SG04
schwer	1/2"	20	400	54	32,0	20,0	32	36	2353-GAI20SG04
schwer	3/4"	14	400	53	37,0	22,0	36	27	2353-GAI14SG06
schwer	3/4"	20	400	56	34,5	22,0	36	36	2353-GAI20SG06
schwer	1"	20	400	60	37,5	24,5	41	36	2353-GAI20SG08
schwer	1"	25	400	62	37,5	24,5	41	46	2353-GAI25SG08
schwer	1 1/4"	30	400	64	40,5	26,5	55	50	2353-GAI30SG10
schwer	1 1/2"	38	250	74	43,5	28,5	60	60	2353-GAI38SG12

dostupné jakosti: 1.4571

Systemy > zářezné kroužky > přímé šroubovací spojky > vnitřní šroubení > válc. závit G



Straight thread connection made of stainless steel

DIN 2353, EN ISO 8341-1

Screw-on thread

cylindrical Whitworth-pipe thread

(BSP/ DIN ISO-228)

Nominal pressures PN

Series	Pipe OØ	PN
L (light)	6 - 15	250
	18 - 22	160
	28 - 42	100
S (heavy)	6 - 14	630
	16 - 25	400
	30 - 38	250

The nominal pressure is a commonly used rounded-off number referring to the pressure that is listed for static loads with a 3- or 4-fold safety margin.

Pressure deductions

Temperature	Pressure deduction
+50°C	4,5%
+100°C	11%
+200°C	20%
+300°C	29%
+400°C	33%

For seal materials such as FPM and Viton, the temperature limits of -25 to +200°C must be noted.

All values specified are guidelines that can also be influenced to a greater or lesser extent by the medium.

