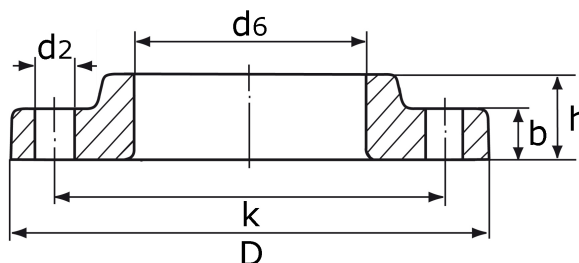


lap joint flange class 150

[zkratka označení: LP150*](#)

ASME B 16.5

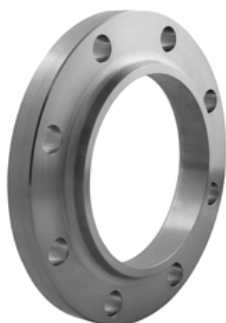


technický list výrobku

| | Za | D | d6 | b | h | d2 | Anz | k | kg |
|--------|---------|-------|-------|------|-------|------|-----|-------|--------|
| 1/2" | Ø21,30 | 90,0 | 22,9 | 11,2 | 16,0 | 15,9 | 4 | 60,3 | 0,523 |
| 3/4" | Ø26,70 | 100,0 | 28,2 | 12,7 | 16,0 | 15,9 | 4 | 69,9 | 0,664 |
| 1" | Ø33,40 | 110,0 | 34,9 | 14,3 | 17,0 | 15,9 | 4 | 79,4 | 0,968 |
| 1 1/4" | Ø42,16 | 115,0 | 43,7 | 17,5 | 21,0 | 15,9 | 4 | 88,9 | 1,182 |
| 1 1/2" | Ø48,26 | 125,0 | 50,0 | 17,5 | 22,0 | 15,9 | 4 | 98,4 | 1,498 |
| 2" | Ø60,32 | 150,0 | 62,5 | 19,1 | 25,0 | 19,1 | 4 | 120,7 | 2,426 |
| 2 1/2" | Ø73,03 | 180,0 | 75,4 | 22,3 | 29,0 | 19,1 | 4 | 139,7 | 3,250 |
| 3" | Ø88,90 | 190,0 | 91,4 | 23,9 | 30,0 | 19,1 | 4 | 152,4 | 4,500 |
| 3 1/2" | Ø101,60 | 215,0 | 104,1 | 23,9 | 32,0 | 19,1 | 8 | 177,8 | 5,100 |
| 4" | Ø114,30 | 230,0 | 116,8 | 23,9 | 33,0 | 19,1 | 8 | 190,5 | 5,800 |
| 5" | Ø141,30 | 255,0 | 144,4 | 23,9 | 36,0 | 22,2 | 8 | 215,9 | 6,800 |
| 6" | Ø168,28 | 280,0 | 171,4 | 25,4 | 40,0 | 22,2 | 8 | 241,3 | 7,921 |
| 8" | Ø219,08 | 345,0 | 222,2 | 28,6 | 44,0 | 22,2 | 8 | 298,5 | 12,153 |
| 10" | Ø273,05 | 405,0 | 277,4 | 30,2 | 49,0 | 25,4 | 12 | 362,0 | 17,418 |
| 12" | Ø323,85 | 485,0 | 328,2 | 31,8 | 56,0 | 25,4 | 12 | 431,8 | 27,560 |
| 14" | Ø355,60 | 535,0 | 360,2 | 35,0 | 79,0 | 28,6 | 12 | 476,3 | 41,000 |
| 16" | Ø406,40 | 595,0 | 411,2 | 36,6 | 87,0 | 28,6 | 16 | 539,8 | 52,000 |
| 18" | Ø457,20 | 635,0 | 462,3 | 39,6 | 97,0 | 31,8 | 16 | 577,9 | 48,900 |
| 20" | Ø508,00 | 700,0 | 514,4 | 42,9 | 103,0 | 31,8 | 20 | 635,0 | 0,000 |
| 24" | Ø609,60 | 815,0 | 616,0 | 47,7 | 111,0 | 34,9 | 20 | 749,3 | 0,000 |

dostupné jakosti: 316L

Příruby > ANSI/ ASME > lap joint > class 150



Přirazení tlaku

Přepočet: 14,5 lbs = 1 barů

| PSI | PN* |
|---------|---------|
| 150 lbs | 10 barů |
| 300 lbs | 20 barů |

(*) Hodnoty zaobleno