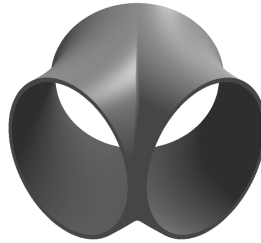
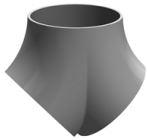


Y-bend, welded

[short name: HB45*](#)

made from two 45° bends type 5

($R=2,5 \times D$)



technical product sheet

D	s	r	Art.-Nr.
21,3	2,0	45,0	HB45-021X20-4
33,7	2,0	73,0	HB45-033X20-4
42,4	2,0	93,0	HB45-042X20-J
42,4	2,6	93,0	HB45-042X26-4
48,3	2,0	108,0	HB45-048X20-4
48,3	2,0	108,0	HB45-048X20-J
60,3	2,0	135,0	HB45-060X20-4
60,3	2,0	135,0	HB45-060X20-J
76,1	2,0	175,0	HB45-076X20-J
88,9	2,0	205,0	HB45-088X20-4
88,9	2,6	205,0	HB45-088X26-4
88,9	2,6	205,0	HB45-088X26-N
88,9	2,9	205,0	HB45-088X29-4
114,3	2,0	270,0	HB45-114X20-J
114,3	2,6	270,0	HB45-114X26-4
114,3	2,6	270,0	HB45-114X26-J
114,3	2,9	270,0	HB45-114X29-2
114,3	2,9	270,0	HB45-114X29-4
139,7	2,6	330,0	HB45-139X26-4
139,7	2,6	330,0	HB45-139X26-J
139,7	2,6	330,0	HB45-139X26-N
139,7	3,0	330,0	HB45-139X30-4
139,7	3,0	330,0	HB45-139X30-J
154,0	2,0	225,0	HB45-154X20-2
154,0	2,0	225,0	HB45-154X20-4
168,3	2,0	390,0	HB45-168X20-J
168,3	2,6	390,0	HB45-168X26-4
168,3	2,6	390,0	HB45-168X26-J
168,3	3,0	390,0	HB45-168X30-4
168,3	3,0	390,0	HB45-168X30-J
219,1	2,0	510,0	HB45-219X20-J
219,1	3,0	510,0	HB45-219X30-4
219,1	3,0	510,0	HB45-219X30-J
219,1	4,0	510,0	HB45-219X40-4
273,0	3,0	625,0	HB45-273X30-4
323,9	3,0	775,0	HB45-323X30-4

D	s	r	Art.-Nr.
323,9	3,0	775,0	HB45-323X30-J

available material: 1.4307, 1.4571

Butt welding fittings > T- and Y-bends > Y-bends > 45°