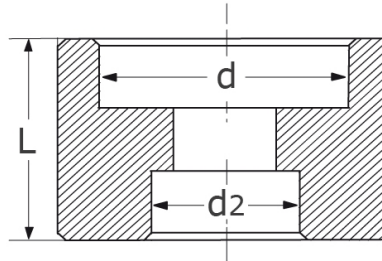
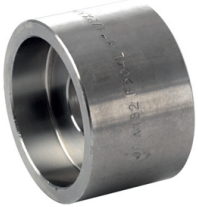


reducing coupling sw, 3000 lbs
high pressure-fitting
ASME B 16.11, ASTM-A 182

[short name: SWRM*](#)



technical product sheet

| Zoll | d | d2 | L | Art.-Nr. |
|--------------|------|------|----|-----------------------|
| 3/8 x 1/4" | 17,8 | 14,4 | 29 | ANSI-SWRM-038X014-3-N |
| 1/2 x 1/4" | 22,0 | 14,4 | 33 | ANSI-SWRM-012X014-3-N |
| 1/2 x 3/8" | 22,0 | 17,8 | 33 | ANSI-SWRM-012X038-3-N |
| 3/4 x 1/2" | 27,4 | 22,0 | 33 | ANSI-SWRM-034X012-3-N |
| 1 x 3/4" | 34,1 | 27,4 | 43 | ANSI-SWRM-100X034-3-N |
| 1 x 1/2" | 34,1 | 22,0 | 43 | ANSI-SWRM-100X012-3-N |
| 1 1/4 x 1" | 42,9 | 34,1 | 43 | ANSI-SWRM-114X100-3-N |
| 1 1/2 x 1" | 49,0 | 34,1 | 43 | ANSI-SWRM-112X100-3-N |
| 1 1/2 x 3/4" | 49,0 | 27,4 | 43 | ANSI-SWRM-112X034-3-N |
| 1 1/2 x 1/2" | 49,0 | 22,0 | 43 | ANSI-SWRM-112X012-3-N |
| 2 x 1 1/2" | 61,5 | 49,0 | 55 | ANSI-SWRM-200X112-3-N |
| 2 x 1 1/4" | 61,5 | 42,9 | 55 | ANSI-SWRM-200X114-3-N |
| 2 x 1" | 61,5 | 34,1 | 55 | ANSI-SWRM-200X100-3-N |

available material: ask

Butt welding fittings > ANSI / ASME > socket welding fittings > reducing couplings