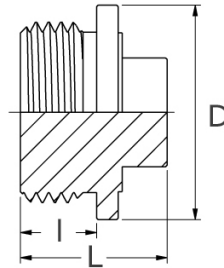


square plug, parallel thread
according to ISO 228/1

[short name: R.237*](#)



technical product sheet

G	L	I	D	PN	kg	Art.-Nr.
1"	27	14,0	39,0	100	0,150	ST-100-4KZ
1 1/4"	33	19,0	49,5	64	0,300	ST-114-4KZ
1 1/2"	35	20,5	59,0	64	0,420	ST-112-4KZ
2"	36	21,0	70,0	64	0,660	ST-200-4KZ
2 1/2"	42	25,0	88,0	40	1,230	ST-212-4KZ
3"	42	25,0	100,0	40	1,650	ST-300-4KZ

available material: 1.4404

Threaded fittings > fittings > PN 50/ 100 > caps/plugs > R-237 > parallel, square head



square plug

R-237

- > made from a solid material - "turned design"
- > Material 1.4404/ AISI 316L
- > Pipethreads for connections not sealed in the threads (cylindrical)
- > Whitworth pipe threads DIN ISO 228 (DIN 259) BSP (British Standard Pipe)
- > with PED-pressure approval (PN 100 up to DN 1" / PN 64 up to DN 2" / PN 40 from DN 2 1/2")

Design pressure

Size	Mpa
up to 1"	10,0
from 1 1/4"	6,4
from 2"	4,0