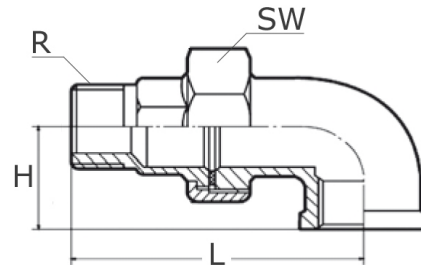
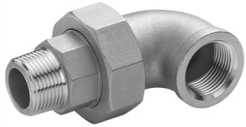


elbow union F/M - ISO 4144

 short name: [WF.IA*](#)

female-/ male thread

flat seat

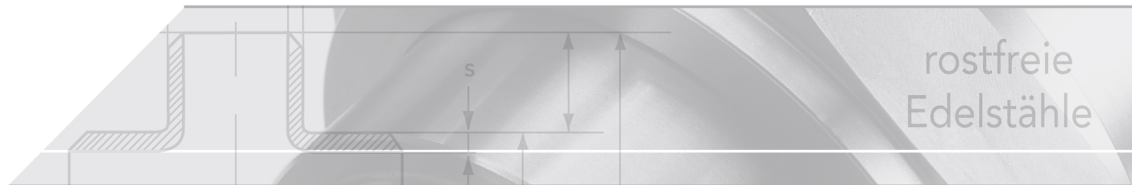


technical product sheet

G	L	H	SW	Art.-Nr.
1/4"	59	21	30	WF-014-0IA
3/8"	61	25	35	WF-038-0IA
1/2"	71	28	41	WF-012-0IA
3/4"	79	33	50	WF-034-0IA
1"	88	38	55	WF-100-0IA
1 1/4"	103	45	65	WF-114-0IA
1 1/2"	110	50	72	WF-112-0IA
2"	119	58	88	WF-200-0IA

available material: 1.4408

Threaded fittings > unions > flat seat > PN 20 (ISO 4144) > elbow unions, F/M



Elbow union

flat sealing

Version

standard according to ISO 4144

material AISI 316/ 1.4408 (V4A)

inspection certificate (APZ) according to DIN EN 10204-3.1

PTFE seal (please ask about sealing materials for temperatures above 100 °C!)

female thread cylindrical according to ISO 228-1 (Code G)

male thread tapered according to EN 10226 - ISO 7-1 (Code R)

Design

Temperature*	Pressure**
-20 to 40 °C	20 bar
100 °C	16 bar
150 °C	15 bar
200 °C	14 bar
220 °C	13 bar

* of the medium

** max. vibration-free operating pressure

Use only as a complete unit. Interchangeability is limited due to the inevitable tolerances in the thread production.

